

Return of Organization Exempt From Income Tax
Under section 501(c), 527, or 4947(a)(1) of the Internal Revenue Code (except private foundations)

▶ Do not enter social security numbers on this form as it may be made public.
▶ Go to www.irs.gov/Form990 for instructions and the latest information.

A For the 2018 calendar year, or tax year beginning **OCT 1, 2018** and ending **SEP 30, 2019**

B Check if applicable: <input type="checkbox"/> Address change <input type="checkbox"/> Name change <input type="checkbox"/> Initial return <input type="checkbox"/> Final return/terminated <input type="checkbox"/> Amended return <input type="checkbox"/> Application pending	C Name of organization BUFFALO PRENATAL-PERINATAL NETWORK, INC. Doing business as Number and street (or P.O. box if mail is not delivered to street address) Room/suite 625 DELAWARE AVENUE 410 City or town, state or province, country, and ZIP or foreign postal code BUFFALO, NY 14202 F Name and address of principal officer: LUANNE BROWN SAME AS C ABOVE	D Employer identification number 16-1302764 E Telephone number 716-844-6711 G Gross receipts \$ 3,118,604. H(a) Is this a group return for subordinates? <input type="checkbox"/> Yes <input checked="" type="checkbox"/> No H(b) Are all subordinates included? <input type="checkbox"/> Yes <input type="checkbox"/> No If "No," attach a list. (see instructions) H(c) Group exemption number ▶
I Tax-exempt status: <input checked="" type="checkbox"/> 501(c)(3) <input type="checkbox"/> 501(c) () ◀ (insert no.) <input type="checkbox"/> 4947(a)(1) or <input type="checkbox"/> 527		
J Website: ▶ WWW.BPPN.ORG		
K Form of organization: <input checked="" type="checkbox"/> Corporation <input type="checkbox"/> Trust <input type="checkbox"/> Association <input type="checkbox"/> Other ▶		L Year of formation: 1987 M State of legal domicile: NY

Part I Summary

	1	Briefly describe the organization's mission or most significant activities: COORDINATE PUBLIC EDUCATION WITH RESPECT TO PRENATAL-PERINATAL, PRECONCEPTION, AND POSTNATAL CARE.		
	2	Check this box <input type="checkbox"/> if the organization discontinued its operations or disposed of more than 25% of its net assets.		
Activities & Governance	3	Number of voting members of the governing body (Part VI, line 1a)	3	24
	4	Number of independent voting members of the governing body (Part VI, line 1b)	4	24
	5	Total number of individuals employed in calendar year 2018 (Part V, line 2a)	5	58
	6	Total number of volunteers (estimate if necessary)	6	38
	7a	Total unrelated business revenue from Part VIII, column (C), line 12	7a	0.
	7b	Net unrelated business taxable income from Form 990-T, line 38	7b	22,254.
	Revenue	8	Contributions and grants (Part VIII, line 1h)	Prior Year 2,909,803.
9		Program service revenue (Part VIII, line 2g)	0.	0.
10		Investment income (Part VIII, column (A), lines 3, 4, and 7d)	1,331.	946.
11		Other revenue (Part VIII, column (A), lines 5, 6d, 8c, 9c, 10c, and 11e)	41,284.	42,789.
12		Total revenue - add lines 8 through 11 (must equal Part VIII, column (A), line 12)	2,952,418.	3,104,202.
Expenses		13	Grants and similar amounts paid (Part IX, column (A), lines 1-3)	0.
	14	Benefits paid to or for members (Part IX, column (A), line 4)	0.	0.
	15	Salaries, other compensation, employee benefits (Part IX, column (A), lines 5-10)	2,436,754.	2,589,872.
	16a	Professional fundraising fees (Part IX, column (A), line 11e)	0.	0.
	b	Total fundraising expenses (Part IX, column (D), line 25) ▶ 2,801.		
	17	Other expenses (Part IX, column (A), lines 11a-11d, 11f-24e)	549,324.	547,687.
	18	Total expenses. Add lines 13-17 (must equal Part IX, column (A), line 25)	2,986,078.	3,137,559.
	19	Revenue less expenses. Subtract line 18 from line 12	-33,660.	-33,357.
Net Assets or Fund Balances	20	Total assets (Part X, line 16)	Beginning of Current Year 1,043,246.	End of Year 1,217,134.
	21	Total liabilities (Part X, line 26)	539,080.	746,325.
	22	Net assets or fund balances. Subtract line 21 from line 20	504,166.	470,809.

Part II Signature Block

Under penalties of perjury, I declare that I have examined this return, including accompanying schedules and statements, and to the best of my knowledge and belief, it is true, correct, and complete. Declaration of preparer (other than officer) is based on all information of which preparer has any knowledge.

Sign Here	Signature of officer LUANNE BROWN, CHIEF EXECUTIVE OFFICER Type or print name and title	Date	
Paid Preparer Use Only	Print/Type preparer's name JUSTIN N. REID	Preparer's signature	Date
	Firm's name ▶ BONADIO & CO., LLP	Firm's EIN ▶ 16-1131146	Check if self-employed <input type="checkbox"/> PTIN P01321869
	Firm's address ▶ 100 CORPORATE PARKWAY, SUITE 200 AMHERST, NY 14226	Phone no. (716) 250-6600	

May the IRS discuss this return with the preparer shown above? (see instructions) Yes No

Part III Statement of Program Service Accomplishments

Check if Schedule O contains a response or note to any line in this Part III [X]

1 Briefly describe the organization's mission: COORDINATE RESEARCH AND PUBLIC EDUCATION WITH RESPECT TO PRENATAL-PERINATAL, PRECONCEPTION, AND POSTNATAL CARE. SPONSOR AND CONDUCT MEETINGS AND LECTURES FOR THE PUBLIC. RECRUIT AND ASSIST LOW INCOME FAMILIES FOR THE PROGRAM.

2 Did the organization undertake any significant program services during the year which were not listed on the prior Form 990 or 990-EZ? [] Yes [X] No

3 Did the organization cease conducting, or make significant changes in how it conducts, any program services? [] Yes [X] No

4 Describe the organization's program service accomplishments for each of its three largest program services, as measured by expenses.

4a (Code:) (Expenses \$ 1,848,213. including grants of \$) (Revenue \$) THE BUFFALO HOME VISITING PROGRAM PROVIDES COMPREHENSIVE HOME BASED SERVICES FOR FAMILIES FOR 3 TO 5 YEARS AFTER A CHILD IS BORN. THE PROGRAM HAS A SINGLE GOAL: TO HELP PARENTS MEET THE CHALLENGES OF PARENTING IN ORDER TO ASSURE HEALTHY DEVELOPMENT FOR THEIR CHILDREN.

4b (Code:) (Expenses \$ 405,143. including grants of \$) (Revenue \$) THE MATERNAL INFANT COMMUNITY HEALTH COLLABORATIVE PROGRAM IS A COMMUNITY-BASED, FAMILY-CENTERED PROGRAM WITH THE GOAL OF ACHIEVING OPTIMAL HEALTH STATUS AMONGST BUFFALO'S PRECONCEPTUAL, PREGNANT, AND PARENTING WOMEN.

4c (Code:) (Expenses \$ 187,833. including grants of \$) (Revenue \$) THE RESPONSIBLE FATHERHOOD INITIATIVE EDUCATES AND ADVOCATES FOR MEN IN THE AREA OF RESPONSIBLE FATHERHOOD TO PROMOTE INVOLVEMENT AND QUALITY OF FATHER/CHILD RELATIONSHIPS.

4d Other program services (Describe in Schedule O.) (Expenses \$ 345,374. including grants of \$) (Revenue \$)

4e Total program service expenses 2,786,563.

Part IV Checklist of Required Schedules

	Yes	No
1 Is the organization described in section 501(c)(3) or 4947(a)(1) (other than a private foundation)? <i>If "Yes," complete Schedule A</i>	X	
2 Is the organization required to complete <i>Schedule B, Schedule of Contributors</i> ?		X
3 Did the organization engage in direct or indirect political campaign activities on behalf of or in opposition to candidates for public office? <i>If "Yes," complete Schedule C, Part I</i>		X
4 Section 501(c)(3) organizations. Did the organization engage in lobbying activities, or have a section 501(h) election in effect during the tax year? <i>If "Yes," complete Schedule C, Part II</i>		X
5 Is the organization a section 501(c)(4), 501(c)(5), or 501(c)(6) organization that receives membership dues, assessments, or similar amounts as defined in Revenue Procedure 98-19? <i>If "Yes," complete Schedule C, Part III</i>		X
6 Did the organization maintain any donor advised funds or any similar funds or accounts for which donors have the right to provide advice on the distribution or investment of amounts in such funds or accounts? <i>If "Yes," complete Schedule D, Part I</i>		X
7 Did the organization receive or hold a conservation easement, including easements to preserve open space, the environment, historic land areas, or historic structures? <i>If "Yes," complete Schedule D, Part II</i>		X
8 Did the organization maintain collections of works of art, historical treasures, or other similar assets? <i>If "Yes," complete Schedule D, Part III</i>		X
9 Did the organization report an amount in Part X, line 21, for escrow or custodial account liability, serve as a custodian for amounts not listed in Part X; or provide credit counseling, debt management, credit repair, or debt negotiation services? <i>If "Yes," complete Schedule D, Part IV</i>		X
10 Did the organization, directly or through a related organization, hold assets in temporarily restricted endowments, permanent endowments, or quasi-endowments? <i>If "Yes," complete Schedule D, Part V</i>		X
11 If the organization's answer to any of the following questions is "Yes," then complete Schedule D, Parts VI, VII, VIII, IX, or X as applicable.		
a Did the organization report an amount for land, buildings, and equipment in Part X, line 10? <i>If "Yes," complete Schedule D, Part VI</i>	X	
b Did the organization report an amount for investments - other securities in Part X, line 12 that is 5% or more of its total assets reported in Part X, line 16? <i>If "Yes," complete Schedule D, Part VII</i>		X
c Did the organization report an amount for investments - program related in Part X, line 13 that is 5% or more of its total assets reported in Part X, line 16? <i>If "Yes," complete Schedule D, Part VIII</i>		X
d Did the organization report an amount for other assets in Part X, line 15 that is 5% or more of its total assets reported in Part X, line 16? <i>If "Yes," complete Schedule D, Part IX</i>		X
e Did the organization report an amount for other liabilities in Part X, line 25? <i>If "Yes," complete Schedule D, Part X</i>	X	
f Did the organization's separate or consolidated financial statements for the tax year include a footnote that addresses the organization's liability for uncertain tax positions under FIN 48 (ASC 740)? <i>If "Yes," complete Schedule D, Part X</i>		X
12a Did the organization obtain separate, independent audited financial statements for the tax year? <i>If "Yes," complete Schedule D, Parts XI and XII</i>	X	
b Was the organization included in consolidated, independent audited financial statements for the tax year? <i>If "Yes," and if the organization answered "No" to line 12a, then completing Schedule D, Parts XI and XII is optional</i>		X
13 Is the organization a school described in section 170(b)(1)(A)(ii)? <i>If "Yes," complete Schedule E</i>		X
14a Did the organization maintain an office, employees, or agents outside of the United States?		X
b Did the organization have aggregate revenues or expenses of more than \$10,000 from grantmaking, fundraising, business, investment, and program service activities outside the United States, or aggregate foreign investments valued at \$100,000 or more? <i>If "Yes," complete Schedule F, Parts I and IV</i>		X
15 Did the organization report on Part IX, column (A), line 3, more than \$5,000 of grants or other assistance to or for any foreign organization? <i>If "Yes," complete Schedule F, Parts II and IV</i>		X
16 Did the organization report on Part IX, column (A), line 3, more than \$5,000 of aggregate grants or other assistance to or for foreign individuals? <i>If "Yes," complete Schedule F, Parts III and IV</i>		X
17 Did the organization report a total of more than \$15,000 of expenses for professional fundraising services on Part IX, column (A), lines 6 and 11e? <i>If "Yes," complete Schedule G, Part I</i>		X
18 Did the organization report more than \$15,000 total of fundraising event gross income and contributions on Part VIII, lines 1c and 8a? <i>If "Yes," complete Schedule G, Part II</i>	X	
19 Did the organization report more than \$15,000 of gross income from gaming activities on Part VIII, line 9a? <i>If "Yes," complete Schedule G, Part III</i>		X
20a Did the organization operate one or more hospital facilities? <i>If "Yes," complete Schedule H</i>		X
b If "Yes" to line 20a, did the organization attach a copy of its audited financial statements to this return?		
21 Did the organization report more than \$5,000 of grants or other assistance to any domestic organization or domestic government on Part IX, column (A), line 1? <i>If "Yes," complete Schedule I, Parts I and II</i>		X

Part IV Checklist of Required Schedules (continued)

Table with 3 columns: Question, Yes, No. Rows 22-38. Includes questions about grants, compensation, tax-exempt bonds, excess benefit transactions, and Schedule O completion.

Part V Statements Regarding Other IRS Filings and Tax Compliance

Check if Schedule O contains a response or note to any line in this Part V

Table with 3 columns: Question, Yes, No. Rows 1a, 1b, 1c. Includes questions about Form 1096, Forms W-2G, and backup withholding rules.

Part V Statements Regarding Other IRS Filings and Tax Compliance (continued)

Table with columns for question number, question text, and Yes/No checkboxes. Includes questions 2a through 16 regarding employee counts, tax returns, business income, foreign accounts, prohibited transactions, and charitable contributions.

Part VI Governance, Management, and Disclosure For each "Yes" response to lines 2 through 7b below, and for a "No" response to line 8a, 8b, or 10b below, describe the circumstances, processes, or changes in Schedule O. See instructions.

Check if Schedule O contains a response or note to any line in this Part VI

Section A. Governing Body and Management

		Yes	No
1a	Enter the number of voting members of the governing body at the end of the tax year If there are material differences in voting rights among members of the governing body, or if the governing body delegated broad authority to an executive committee or similar committee, explain in Schedule O.		
	1a 24		
b	Enter the number of voting members included in line 1a, above, who are independent		
	1b 24		
2	Did any officer, director, trustee, or key employee have a family relationship or a business relationship with any other officer, director, trustee, or key employee?		X
3	Did the organization delegate control over management duties customarily performed by or under the direct supervision of officers, directors, or trustees, or key employees to a management company or other person?		X
4	Did the organization make any significant changes to its governing documents since the prior Form 990 was filed?		X
5	Did the organization become aware during the year of a significant diversion of the organization's assets?		X
6	Did the organization have members or stockholders?		X
7a	Did the organization have members, stockholders, or other persons who had the power to elect or appoint one or more members of the governing body?		X
b	Are any governance decisions of the organization reserved to (or subject to approval by) members, stockholders, or persons other than the governing body?		X
8	Did the organization contemporaneously document the meetings held or written actions undertaken during the year by the following:		
a	The governing body?	X	
b	Each committee with authority to act on behalf of the governing body?	X	
9	Is there any officer, director, trustee, or key employee listed in Part VII, Section A, who cannot be reached at the organization's mailing address? If "Yes," provide the names and addresses in Schedule O		X

Section B. Policies (This Section B requests information about policies not required by the Internal Revenue Code.)

		Yes	No
10a	Did the organization have local chapters, branches, or affiliates?		X
b	If "Yes," did the organization have written policies and procedures governing the activities of such chapters, affiliates, and branches to ensure their operations are consistent with the organization's exempt purposes?		
10b			
11a	Has the organization provided a complete copy of this Form 990 to all members of its governing body before filing the form?	X	
b	Describe in Schedule O the process, if any, used by the organization to review this Form 990.		
12a	Did the organization have a written conflict of interest policy? If "No," go to line 13	X	
b	Were officers, directors, or trustees, and key employees required to disclose annually interests that could give rise to conflicts?	X	
c	Did the organization regularly and consistently monitor and enforce compliance with the policy? If "Yes," describe in Schedule O how this was done	X	
12c		X	
13	Did the organization have a written whistleblower policy?	X	
14	Did the organization have a written document retention and destruction policy?	X	
15	Did the process for determining compensation of the following persons include a review and approval by independent persons, comparability data, and contemporaneous substantiation of the deliberation and decision?		
a	The organization's CEO, Executive Director, or top management official	X	
b	Other officers or key employees of the organization		X
	If "Yes" to line 15a or 15b, describe the process in Schedule O (see instructions).		
16a	Did the organization invest in, contribute assets to, or participate in a joint venture or similar arrangement with a taxable entity during the year?		X
b	If "Yes," did the organization follow a written policy or procedure requiring the organization to evaluate its participation in joint venture arrangements under applicable federal tax law, and take steps to safeguard the organization's exempt status with respect to such arrangements?		
16b			

Section C. Disclosure

- 17** List the states with which a copy of this Form 990 is required to be filed **▶ NY**
- 18** Section 6104 requires an organization to make its Forms 1023 (1024 or 1024-A if applicable), 990, and 990-T (Section 501(c)(3)s only) available for public inspection. Indicate how you made these available. Check all that apply.
 Own website Another's website Upon request Other (explain in Schedule O)
- 19** Describe in Schedule O whether (and if so, how) the organization made its governing documents, conflict of interest policy, and financial statements available to the public during the tax year.
- 20** State the name, address, and telephone number of the person who possesses the organization's books and records **▶**
MICHAEL ALOIAN - 716-884-6711
625 DELAWARE AVENUE, SUITE 410, BUFFALO, NY 14202

Part VII Compensation of Officers, Directors, Trustees, Key Employees, Highest Compensated Employees, and Independent Contractors

Check if Schedule O contains a response or note to any line in this Part VII

Section A. Officers, Directors, Trustees, Key Employees, and Highest Compensated Employees

1a Complete this table for all persons required to be listed. Report compensation for the calendar year ending with or within the organization's tax year.

- List all of the organization's **current** officers, directors, trustees (whether individuals or organizations), regardless of amount of compensation. Enter -0- in columns (D), (E), and (F) if no compensation was paid.
- List all of the organization's **current** key employees, if any. See instructions for definition of "key employee."
- List the organization's five **current** highest compensated employees (other than an officer, director, trustee, or key employee) who received reportable compensation (Box 5 of Form W-2 and/or Box 7 of Form 1099-MISC) of more than \$100,000 from the organization and any related organizations.
- List all of the organization's **former** officers, key employees, and highest compensated employees who received more than \$100,000 of reportable compensation from the organization and any related organizations.
- List all of the organization's **former directors or trustees** that received, in the capacity as a former director or trustee of the organization, more than \$10,000 of reportable compensation from the organization and any related organizations.

List persons in the following order: individual trustees or directors; institutional trustees; officers; key employees; highest compensated employees; and former such persons.

Check this box if neither the organization nor any related organization compensated any current officer, director, or trustee.

(A) Name and Title	(B) Average hours per week (list any hours for related organizations below line)	(C) Position (do not check more than one box, unless person is both an officer and a director/trustee)						(D) Reportable compensation from the organization (W-2/1099-MISC)	(E) Reportable compensation from related organizations (W-2/1099-MISC)	(F) Estimated amount of other compensation from the organization and related organizations
		Individual trustee or director	Institutional trustee	Officer	Key employee	Highest compensated employee	Former			
(1) KAREN BLOUNT TREASURER	1.00	X		X			0.	0.	0.	
(2) MARY DILLON PRESIDENT	1.00	X		X			0.	0.	0.	
(3) SHANA DICAMILLO DIRECTOR	1.00	X					0.	0.	0.	
(4) CASSANDRA CHURCH DIRECTOR	1.00	X					0.	0.	0.	
(5) ELISE MURPHY DIRECTOR	1.00	X					0.	0.	0.	
(6) PATRICIA KINZ DIRECTOR	1.00	X					0.	0.	0.	
(7) RANTANYA ADAMS DIRECTOR	1.00	X					0.	0.	0.	
(8) VANESSA BARNABEI DIRECTOR	1.00	X					0.	0.	0.	
(9) GALE BURSTEIN DIRECTOR	1.00	X					0.	0.	0.	
(10) RENEE J. CHRISTIAN DIRECTOR	1.00	X					0.	0.	0.	
(11) HOPE KEILMAN PERSONNEL COMMITTEE CHAIR	1.00	X		X			0.	0.	0.	
(12) BRIANA JEGIER DIRECTOR	1.00	X					0.	0.	0.	
(13) HEIDI ROMER DIRECTOR	1.00	X					0.	0.	0.	
(14) DEBORAH ORTIZ DIRECTOR	1.00	X					0.	0.	0.	
(15) TERRY SEAY DIRECTOR	1.00	X					0.	0.	0.	
(16) WHITNEY MENDEL PROGRAM COMMITTEE CHAIR	1.00	X		X			0.	0.	0.	
(17) CARRIE MEYER DIRECTOR	1.00	X					0.	0.	0.	

Part VII Section A. Officers, Directors, Trustees, Key Employees, and Highest Compensated Employees (continued)

(A) Name and title	(B) Average hours per week (list any hours for related organizations below line)	(C) Position (do not check more than one box, unless person is both an officer and a director/trustee)						(D) Reportable compensation from the organization (W-2/1099-MISC)	(E) Reportable compensation from related organizations (W-2/1099-MISC)	(F) Estimated amount of other compensation from the organization and related organizations
		Individual trustee or director	Institutional trustee	Officer	Key employee	Highest compensated employee	Former			
(18) MIRIAM LAWRENCE SECRETARY	1.00	X		X				0.	0.	0.
(19) LISA SCHMIDT DIRECTOR	1.00	X						0.	0.	0.
(20) BROOKE SMITH SUSTAINABILITY COMMITTEE CHAIR	1.00	X		X				0.	0.	0.
(21) MICHAEL WOODS DIRECTOR	1.00	X						0.	0.	0.
(22) JANET NORDLING NOMINATING COMMITTEE CHAIR	1.00	X		X				0.	0.	0.
(23) DAVID HAYES DIRECTOR	1.00	X						0.	0.	0.
(24) LUANNE BROWN CHIEF EXECUTIVE DIRECTOR	40.00			X				104,018.	0.	0.
(25) SUSAN MANERA FINANCE AND HR MANAGER	40.00			X				75,595.	0.	0.
1b Sub-total								179,613.	0.	0.
c Total from continuation sheets to Part VII, Section A								0.	0.	0.
d Total (add lines 1b and 1c)								179,613.	0.	0.

2 Total number of individuals (including but not limited to those listed above) who received more than \$100,000 of reportable compensation from the organization **1**

	Yes	No
3 Did the organization list any former officer, director, or trustee, key employee, or highest compensated employee on line 1a? If "Yes," complete Schedule J for such individual		X
4 For any individual listed on line 1a, is the sum of reportable compensation and other compensation from the organization and related organizations greater than \$150,000? If "Yes," complete Schedule J for such individual		X
5 Did any person listed on line 1a receive or accrue compensation from any unrelated organization or individual for services rendered to the organization? If "Yes," complete Schedule J for such person		X

Section B. Independent Contractors

1 Complete this table for your five highest compensated independent contractors that received more than \$100,000 of compensation from the organization. Report compensation for the calendar year ending with or within the organization's tax year.

(A) Name and business address	(B) Description of services	(C) Compensation
NONE		

2 Total number of independent contractors (including but not limited to those listed above) who received more than \$100,000 of compensation from the organization **0**

Part VIII Statement of Revenue

Check if Schedule O contains a response or note to any line in this Part VIII

		(A) Total revenue	(B) Related or exempt function revenue	(C) Unrelated business revenue	(D) Revenue excluded from tax under sections 512 - 514	
Contributions, Gifts, Grants and Other Similar Amounts	1 a Federated campaigns	1a 50,000.				
	b Membership dues	1b				
	c Fundraising events	1c 3,120.				
	d Related organizations	1d				
	e Government grants (contributions)	1e 2,748,799.				
	f All other contributions, gifts, grants, and similar amounts not included above	1f 258,548.				
	g Noncash contributions included in lines 1a-1f: \$					
	h Total. Add lines 1a-1f	▶ 3,060,467.				
Program Service Revenue	2 a _____	Business Code				
	b _____					
	c _____					
	d _____					
	e _____					
	f All other program service revenue					
	g Total. Add lines 2a-2f	▶				
Other Revenue	3 Investment income (including dividends, interest, and other similar amounts)	▶ 946.			946.	
	4 Income from investment of tax-exempt bond proceeds	▶				
	5 Royalties	▶				
	6 a Gross rents	(i) Real				
		(ii) Personal				
		b Less: rental expenses				
		c Rental income or (loss)				
	d Net rental income or (loss)	▶				
	7 a Gross amount from sales of assets other than inventory	(i) Securities				
		(ii) Other				
		b Less: cost or other basis and sales expenses				
		c Gain or (loss)				
	d Net gain or (loss)	▶				
	8 a Gross income from fundraising events (not including \$ 3,120. of contributions reported on line 1c). See Part IV, line 18	a 57,191.				
		b Less: direct expenses	b 14,402.			
c Net income or (loss) from fundraising events		▶ 42,789.			42,789.	
9 a Gross income from gaming activities. See Part IV, line 19	a					
	b Less: direct expenses	b				
	c Net income or (loss) from gaming activities	▶				
10 a Gross sales of inventory, less returns and allowances	a					
	b Less: cost of goods sold	b				
	c Net income or (loss) from sales of inventory	▶				
Miscellaneous Revenue		Business Code				
11 a _____						
	b _____					
	c _____					
	d All other revenue					
	e Total. Add lines 11a-11d	▶				
12 Total revenue. See instructions	▶ 3,104,202.	0.	0.	43,735.		

Part IX Statement of Functional Expenses

Section 501(c)(3) and 501(c)(4) organizations must complete all columns. All other organizations must complete column (A).

Check if Schedule O contains a response or note to any line in this Part IX

Do not include amounts reported on lines 6b, 7b, 8b, 9b, and 10b of Part VIII.	(A) Total expenses	(B) Program service expenses	(C) Management and general expenses	(D) Fundraising expenses
1 Grants and other assistance to domestic organizations and domestic governments. See Part IV, line 21 ...				
2 Grants and other assistance to domestic individuals. See Part IV, line 22				
3 Grants and other assistance to foreign organizations, foreign governments, and foreign individuals. See Part IV, lines 15 and 16				
4 Benefits paid to or for members				
5 Compensation of current officers, directors, trustees, and key employees	125,354.	120,788.	4,566.	
6 Compensation not included above, to disqualified persons (as defined under section 4958(f)(1)) and persons described in section 4958(c)(3)(B)				
7 Other salaries and wages	1,762,127.	1,565,725.	196,402.	
8 Pension plan accruals and contributions (include section 401(k) and 403(b) employer contributions)	177,681.	159,913.	17,768.	
9 Other employee benefits	275,545.	246,055.	29,490.	
10 Payroll taxes	249,165.	225,029.	24,136.	
11 Fees for services (non-employees):				
a Management				
b Legal	2,477.		2,477.	
c Accounting	12,226.	6,113.	6,113.	
d Lobbying				
e Professional fundraising services. See Part IV, line 17				
f Investment management fees				
g Other. (If line 11g amount exceeds 10% of line 25, column (A) amount, list line 11g expenses on Sch O.)	11,758.	4,528.	7,230.	
12 Advertising and promotion	963.		887.	76.
13 Office expenses	140,183.	133,284.	6,681.	218.
14 Information technology				
15 Royalties				
16 Occupancy	134,144.	120,730.	13,414.	
17 Travel	67,405.	56,129.	11,276.	
18 Payments of travel or entertainment expenses for any federal, state, or local public officials ...				
19 Conferences, conventions, and meetings	29,782.	22,820.	6,962.	
20 Interest	206.		206.	
21 Payments to affiliates				
22 Depreciation, depletion, and amortization	27,265.	27,265.		
23 Insurance	8,700.	8,700.		
24 Other expenses. Itemize expenses not covered above. (List miscellaneous expenses in line 24e. If line 24e amount exceeds 10% of line 25, column (A) amount, list line 24e expenses on Schedule O.)				
a EDUCATIONAL ACTIVITIES	54,797.	54,797.		
b OUTREACH AND EDUCATION	36,327.	24,207.	12,120.	
c OTHER	18,807.	10,480.	8,327.	
d REPAIRS AND MAINTENANCE	2,647.	0.	140.	2,507.
e All other expenses _____				
25 Total functional expenses. Add lines 1 through 24e	3,137,559.	2,786,563.	348,195.	2,801.
26 Joint costs. Complete this line only if the organization reported in column (B) joint costs from a combined educational campaign and fundraising solicitation.				

Check here if following SOP 98-2 (ASC 958-720)

Part X Balance Sheet

Check if Schedule O contains a response or note to any line in this Part X

		(A) Beginning of year		(B) End of year
Assets	1 Cash - non-interest-bearing	434,413.	1	259,932.
	2 Savings and temporary cash investments		2	
	3 Pledges and grants receivable, net	524,344.	3	882,644.
	4 Accounts receivable, net		4	
	5 Loans and other receivables from current and former officers, directors, trustees, key employees, and highest compensated employees. Complete Part II of Schedule L		5	
	6 Loans and other receivables from other disqualified persons (as defined under section 4958(f)(1)), persons described in section 4958(c)(3)(B), and contributing employers and sponsoring organizations of section 501(c)(9) voluntary employees' beneficiary organizations (see instr). Complete Part II of Sch L		6	
	7 Notes and loans receivable, net		7	
	8 Inventories for sale or use		8	
	9 Prepaid expenses and deferred charges		9	
	10a Land, buildings, and equipment: cost or other basis. Complete Part VI of Schedule D	10a 332,357.		
	b Less: accumulated depreciation	10b 257,799.	84,489.	10c 74,558.
	11 Investments - publicly traded securities		11	
	12 Investments - other securities. See Part IV, line 11		12	
	13 Investments - program-related. See Part IV, line 11		13	
	14 Intangible assets		14	
	15 Other assets. See Part IV, line 11		15	
16 Total assets. Add lines 1 through 15 (must equal line 34)		1,043,246.	16	1,217,134.
Liabilities	17 Accounts payable and accrued expenses	136,680.	17	171,339.
	18 Grants payable		18	
	19 Deferred revenue		19	
	20 Tax-exempt bond liabilities		20	
	21 Escrow or custodial account liability. Complete Part IV of Schedule D		21	
	22 Loans and other payables to current and former officers, directors, trustees, key employees, highest compensated employees, and disqualified persons. Complete Part II of Schedule L		22	
	23 Secured mortgages and notes payable to unrelated third parties		23	
	24 Unsecured notes and loans payable to unrelated third parties		24	
	25 Other liabilities (including federal income tax, payables to related third parties, and other liabilities not included on lines 17-24). Complete Part X of Schedule D	402,400.	25	574,986.
	26 Total liabilities. Add lines 17 through 25	539,080.	26	746,325.
Net Assets or Fund Balances	Organizations that follow SFAS 117 (ASC 958), check here <input checked="" type="checkbox"/> and complete lines 27 through 29, and lines 33 and 34.			
	27 Unrestricted net assets	466,666.	27	433,309.
	28 Temporarily restricted net assets	37,500.	28	37,500.
	29 Permanently restricted net assets		29	
	Organizations that do not follow SFAS 117 (ASC 958), check here <input type="checkbox"/> and complete lines 30 through 34.			
	30 Capital stock or trust principal, or current funds		30	
	31 Paid-in or capital surplus, or land, building, or equipment fund		31	
	32 Retained earnings, endowment, accumulated income, or other funds		32	
33 Total net assets or fund balances	504,166.	33	470,809.	
34 Total liabilities and net assets/fund balances	1,043,246.	34	1,217,134.	

Part XI Reconciliation of Net Assets

Check if Schedule O contains a response or note to any line in this Part XI

1	Total revenue (must equal Part VIII, column (A), line 12)	1	3,104,202.
2	Total expenses (must equal Part IX, column (A), line 25)	2	3,137,559.
3	Revenue less expenses. Subtract line 2 from line 1	3	-33,357.
4	Net assets or fund balances at beginning of year (must equal Part X, line 33, column (A))	4	504,166.
5	Net unrealized gains (losses) on investments	5	
6	Donated services and use of facilities	6	
7	Investment expenses	7	
8	Prior period adjustments	8	
9	Other changes in net assets or fund balances (explain in Schedule O)	9	0.
10	Net assets or fund balances at end of year. Combine lines 3 through 9 (must equal Part X, line 33, column (B))	10	470,809.

Part XII Financial Statements and Reporting

Check if Schedule O contains a response or note to any line in this Part XII

- 1 Accounting method used to prepare the Form 990: Cash Accrual Other
If the organization changed its method of accounting from a prior year or checked "Other," explain in Schedule O.
- 2a Were the organization's financial statements compiled or reviewed by an independent accountant?
If "Yes," check a box below to indicate whether the financial statements for the year were compiled or reviewed on a separate basis, consolidated basis, or both:
 Separate basis Consolidated basis Both consolidated and separate basis
- b Were the organization's financial statements audited by an independent accountant?
If "Yes," check a box below to indicate whether the financial statements for the year were audited on a separate basis, consolidated basis, or both:
 Separate basis Consolidated basis Both consolidated and separate basis
- c If "Yes" to line 2a or 2b, does the organization have a committee that assumes responsibility for oversight of the audit, review, or compilation of its financial statements and selection of an independent accountant?
If the organization changed either its oversight process or selection process during the tax year, explain in Schedule O.
- 3a As a result of a federal award, was the organization required to undergo an audit or audits as set forth in the Single Audit Act and OMB Circular A-133?
- b If "Yes," did the organization undergo the required audit or audits? If the organization did not undergo the required audit or audits, explain why in Schedule O and describe any steps taken to undergo such audits

	Yes	No
2a		X
2b	X	
2c	X	
3a	X	
3b	X	

Form 990 (2018)

Part II Support Schedule for Organizations Described in Sections 170(b)(1)(A)(iv) and 170(b)(1)(A)(vi)

(Complete only if you checked the box on line 5, 7, or 8 of Part I or if the organization failed to qualify under Part III. If the organization fails to qualify under the tests listed below, please complete Part III.)

Section A. Public Support

Calendar year (or fiscal year beginning in) ▶	(a) 2014	(b) 2015	(c) 2016	(d) 2017	(e) 2018	(f) Total
1 Gifts, grants, contributions, and membership fees received. (Do not include any "unusual grants.")	2837366.	3147315.	2922207.	2906995.	3057347.	14871230.
2 Tax revenues levied for the organization's benefit and either paid to or expended on its behalf						
3 The value of services or facilities furnished by a governmental unit to the organization without charge						
4 Total. Add lines 1 through 3	2837366.	3147315.	2922207.	2906995.	3057347.	14871230.
5 The portion of total contributions by each person (other than a governmental unit or publicly supported organization) included on line 1 that exceeds 2% of the amount shown on line 11, column (f)						
6 Public support. Subtract line 5 from line 4.						14871230.

Section B. Total Support

Calendar year (or fiscal year beginning in) ▶	(a) 2014	(b) 2015	(c) 2016	(d) 2017	(e) 2018	(f) Total
7 Amounts from line 4	2837366.	3147315.	2922207.	2906995.	3057347.	14871230.
8 Gross income from interest, dividends, payments received on securities loans, rents, royalties, and income from similar sources	196.	860.	2,154.	1,331.	946.	5,487.
9 Net income from unrelated business activities, whether or not the business is regularly carried on						
10 Other income. Do not include gain or loss from the sale of capital assets (Explain in Part VI.)	97.					97.
11 Total support. Add lines 7 through 10						14876814.
12 Gross receipts from related activities, etc. (see instructions)					12	
13 First five years. If the Form 990 is for the organization's first, second, third, fourth, or fifth tax year as a section 501(c)(3) organization, check this box and stop here						<input type="checkbox"/>

Section C. Computation of Public Support Percentage

14 Public support percentage for 2018 (line 6, column (f) divided by line 11, column (f))	14	99.96	%
15 Public support percentage from 2017 Schedule A, Part II, line 14	15	99.96	%
16a 33 1/3% support test - 2018. If the organization did not check the box on line 13, and line 14 is 33 1/3% or more, check this box and stop here. The organization qualifies as a publicly supported organization	▶ <input checked="" type="checkbox"/>		
b 33 1/3% support test - 2017. If the organization did not check a box on line 13 or 16a, and line 15 is 33 1/3% or more, check this box and stop here. The organization qualifies as a publicly supported organization	▶ <input type="checkbox"/>		
17a 10% -facts-and-circumstances test - 2018. If the organization did not check a box on line 13, 16a, or 16b, and line 14 is 10% or more, and if the organization meets the "facts-and-circumstances" test, check this box and stop here. Explain in Part VI how the organization meets the "facts-and-circumstances" test. The organization qualifies as a publicly supported organization	▶ <input type="checkbox"/>		
b 10% -facts-and-circumstances test - 2017. If the organization did not check a box on line 13, 16a, 16b, or 17a, and line 15 is 10% or more, and if the organization meets the "facts-and-circumstances" test, check this box and stop here. Explain in Part VI how the organization meets the "facts-and-circumstances" test. The organization qualifies as a publicly supported organization	▶ <input type="checkbox"/>		
18 Private foundation. If the organization did not check a box on line 13, 16a, 16b, 17a, or 17b, check this box and see instructions	▶ <input type="checkbox"/>		

Part III Support Schedule for Organizations Described in Section 509(a)(2)

(Complete only if you checked the box on line 10 of Part I or if the organization failed to qualify under Part II. If the organization fails to qualify under the tests listed below, please complete Part II.)

Section A. Public Support

Calendar year (or fiscal year beginning in) ►	(a) 2014	(b) 2015	(c) 2016	(d) 2017	(e) 2018	(f) Total
1 Gifts, grants, contributions, and membership fees received. (Do not include any "unusual grants.")						
2 Gross receipts from admissions, merchandise sold or services performed, or facilities furnished in any activity that is related to the organization's tax-exempt purpose						
3 Gross receipts from activities that are not an unrelated trade or business under section 513						
4 Tax revenues levied for the organization's benefit and either paid to or expended on its behalf						
5 The value of services or facilities furnished by a governmental unit to the organization without charge						
6 Total. Add lines 1 through 5						
7a Amounts included on lines 1, 2, and 3 received from disqualified persons						
b Amounts included on lines 2 and 3 received from other than disqualified persons that exceed the greater of \$5,000 or 1% of the amount on line 13 for the year						
c Add lines 7a and 7b						
8 Public support. (Subtract line 7c from line 6.)						

Section B. Total Support

Calendar year (or fiscal year beginning in) ►	(a) 2014	(b) 2015	(c) 2016	(d) 2017	(e) 2018	(f) Total
9 Amounts from line 6						
10a Gross income from interest, dividends, payments received on securities loans, rents, royalties, and income from similar sources						
b Unrelated business taxable income (less section 511 taxes) from businesses acquired after June 30, 1975						
c Add lines 10a and 10b						
11 Net income from unrelated business activities not included in line 10b, whether or not the business is regularly carried on						
12 Other income. Do not include gain or loss from the sale of capital assets (Explain in Part VI.)						
13 Total support. (Add lines 9, 10c, 11, and 12.)						

14 First five years. If the Form 990 is for the organization's first, second, third, fourth, or fifth tax year as a section 501(c)(3) organization, check this box and **stop here**

Section C. Computation of Public Support Percentage

15 Public support percentage for 2018 (line 8, column (f), divided by line 13, column (f))	15	%
16 Public support percentage from 2017 Schedule A, Part III, line 15	16	%

Section D. Computation of Investment Income Percentage

17 Investment income percentage for 2018 (line 10c, column (f), divided by line 13, column (f))	17	%
18 Investment income percentage from 2017 Schedule A, Part III, line 17	18	%

19a 33 1/3% support tests - 2018. If the organization did not check the box on line 14, and line 15 is more than 33 1/3%, and line 17 is not more than 33 1/3%, check this box and **stop here**. The organization qualifies as a publicly supported organization

b 33 1/3% support tests - 2017. If the organization did not check a box on line 14 or line 19a, and line 16 is more than 33 1/3%, and line 18 is not more than 33 1/3%, check this box and **stop here**. The organization qualifies as a publicly supported organization

20 Private foundation. If the organization did not check a box on line 14, 19a, or 19b, check this box and see instructions

Part IV Supporting Organizations

(Complete only if you checked a box in line 12 on Part I. If you checked 12a of Part I, complete Sections A and B. If you checked 12b of Part I, complete Sections A and C. If you checked 12c of Part I, complete Sections A, D, and E. If you checked 12d of Part I, complete Sections A and D, and complete Part V.)

Section A. All Supporting Organizations

	Yes	No
1 Are all of the organization's supported organizations listed by name in the organization's governing documents? <i>If "No," describe in Part VI how the supported organizations are designated. If designated by class or purpose, describe the designation. If historic and continuing relationship, explain.</i>		
2 Did the organization have any supported organization that does not have an IRS determination of status under section 509(a)(1) or (2)? <i>If "Yes," explain in Part VI how the organization determined that the supported organization was described in section 509(a)(1) or (2).</i>		
3a Did the organization have a supported organization described in section 501(c)(4), (5), or (6)? <i>If "Yes," answer (b) and (c) below.</i>		
b Did the organization confirm that each supported organization qualified under section 501(c)(4), (5), or (6) and satisfied the public support tests under section 509(a)(2)? <i>If "Yes," describe in Part VI when and how the organization made the determination.</i>		
c Did the organization ensure that all support to such organizations was used exclusively for section 170(c)(2)(B) purposes? <i>If "Yes," explain in Part VI what controls the organization put in place to ensure such use.</i>		
4a Was any supported organization not organized in the United States ("foreign supported organization")? <i>If "Yes," and if you checked 12a or 12b in Part I, answer (b) and (c) below.</i>		
b Did the organization have ultimate control and discretion in deciding whether to make grants to the foreign supported organization? <i>If "Yes," describe in Part VI how the organization had such control and discretion despite being controlled or supervised by or in connection with its supported organizations.</i>		
c Did the organization support any foreign supported organization that does not have an IRS determination under sections 501(c)(3) and 509(a)(1) or (2)? <i>If "Yes," explain in Part VI what controls the organization used to ensure that all support to the foreign supported organization was used exclusively for section 170(c)(2)(B) purposes.</i>		
5a Did the organization add, substitute, or remove any supported organizations during the tax year? <i>If "Yes," answer (b) and (c) below (if applicable). Also, provide detail in Part VI, including (i) the names and EIN numbers of the supported organizations added, substituted, or removed; (ii) the reasons for each such action; (iii) the authority under the organization's organizing document authorizing such action; and (iv) how the action was accomplished (such as by amendment to the organizing document).</i>		
b Type I or Type II only. Was any added or substituted supported organization part of a class already designated in the organization's organizing document?		
c Substitutions only. Was the substitution the result of an event beyond the organization's control?		
6 Did the organization provide support (whether in the form of grants or the provision of services or facilities) to anyone other than (i) its supported organizations, (ii) individuals that are part of the charitable class benefited by one or more of its supported organizations, or (iii) other supporting organizations that also support or benefit one or more of the filing organization's supported organizations? <i>If "Yes," provide detail in Part VI.</i>		
7 Did the organization provide a grant, loan, compensation, or other similar payment to a substantial contributor (as defined in section 4958(c)(3)(C)), a family member of a substantial contributor, or a 35% controlled entity with regard to a substantial contributor? <i>If "Yes," complete Part I of Schedule L (Form 990 or 990-EZ).</i>		
8 Did the organization make a loan to a disqualified person (as defined in section 4958) not described in line 7? <i>If "Yes," complete Part I of Schedule L (Form 990 or 990-EZ).</i>		
9a Was the organization controlled directly or indirectly at any time during the tax year by one or more disqualified persons as defined in section 4946 (other than foundation managers and organizations described in section 509(a)(1) or (2))? <i>If "Yes," provide detail in Part VI.</i>		
b Did one or more disqualified persons (as defined in line 9a) hold a controlling interest in any entity in which the supporting organization had an interest? <i>If "Yes," provide detail in Part VI.</i>		
c Did a disqualified person (as defined in line 9a) have an ownership interest in, or derive any personal benefit from, assets in which the supporting organization also had an interest? <i>If "Yes," provide detail in Part VI.</i>		
10a Was the organization subject to the excess business holdings rules of section 4943 because of section 4943(f) (regarding certain Type II supporting organizations, and all Type III non-functionally integrated supporting organizations)? <i>If "Yes," answer 10b below.</i>		
b Did the organization have any excess business holdings in the tax year? <i>(Use Schedule C, Form 4720, to determine whether the organization had excess business holdings.)</i>		

Part IV Supporting Organizations (continued)

	Yes	No
11 Has the organization accepted a gift or contribution from any of the following persons?		
a A person who directly or indirectly controls, either alone or together with persons described in (b) and (c) below, the governing body of a supported organization?		
b A family member of a person described in (a) above?		
c A 35% controlled entity of a person described in (a) or (b) above? <i>If "Yes" to a, b, or c, provide detail in Part VI.</i>		

Section B. Type I Supporting Organizations

	Yes	No
1 Did the directors, trustees, or membership of one or more supported organizations have the power to regularly appoint or elect at least a majority of the organization's directors or trustees at all times during the tax year? <i>If "No," describe in Part VI how the supported organization(s) effectively operated, supervised, or controlled the organization's activities. If the organization had more than one supported organization, describe how the powers to appoint and/or remove directors or trustees were allocated among the supported organizations and what conditions or restrictions, if any, applied to such powers during the tax year.</i>		
2 Did the organization operate for the benefit of any supported organization other than the supported organization(s) that operated, supervised, or controlled the supporting organization? <i>If "Yes," explain in Part VI how providing such benefit carried out the purposes of the supported organization(s) that operated, supervised, or controlled the supporting organization.</i>		

Section C. Type II Supporting Organizations

	Yes	No
1 Were a majority of the organization's directors or trustees during the tax year also a majority of the directors or trustees of each of the organization's supported organization(s)? <i>If "No," describe in Part VI how control or management of the supporting organization was vested in the same persons that controlled or managed the supported organization(s).</i>		

Section D. All Type III Supporting Organizations

	Yes	No
1 Did the organization provide to each of its supported organizations, by the last day of the fifth month of the organization's tax year, (i) a written notice describing the type and amount of support provided during the prior tax year, (ii) a copy of the Form 990 that was most recently filed as of the date of notification, and (iii) copies of the organization's governing documents in effect on the date of notification, to the extent not previously provided?		
2 Were any of the organization's officers, directors, or trustees either (i) appointed or elected by the supported organization(s) or (ii) serving on the governing body of a supported organization? <i>If "No," explain in Part VI how the organization maintained a close and continuous working relationship with the supported organization(s).</i>		
3 By reason of the relationship described in (2), did the organization's supported organizations have a significant voice in the organization's investment policies and in directing the use of the organization's income or assets at all times during the tax year? <i>If "Yes," describe in Part VI the role the organization's supported organizations played in this regard.</i>		

Section E. Type III Functionally Integrated Supporting Organizations

1 Check the box next to the method that the organization used to satisfy the Integral Part Test during the year (see instructions).		
a <input type="checkbox"/> The organization satisfied the Activities Test. Complete line 2 below.		
b <input type="checkbox"/> The organization is the parent of each of its supported organizations. Complete line 3 below.		
c <input type="checkbox"/> The organization supported a governmental entity. Describe in Part VI how you supported a government entity (see instructions).		
2 Activities Test. Answer (a) and (b) below.		
a Did substantially all of the organization's activities during the tax year directly further the exempt purposes of the supported organization(s) to which the organization was responsive? <i>If "Yes," then in Part VI identify those supported organizations and explain how these activities directly furthered their exempt purposes, how the organization was responsive to those supported organizations, and how the organization determined that these activities constituted substantially all of its activities.</i>		
b Did the activities described in (a) constitute activities that, but for the organization's involvement, one or more of the organization's supported organization(s) would have been engaged in? <i>If "Yes," explain in Part VI the reasons for the organization's position that its supported organization(s) would have engaged in these activities but for the organization's involvement.</i>		
3 Parent of Supported Organizations. Answer (a) and (b) below.		
a Did the organization have the power to regularly appoint or elect a majority of the officers, directors, or trustees of each of the supported organizations? <i>Provide details in Part VI.</i>		
b Did the organization exercise a substantial degree of direction over the policies, programs, and activities of each of its supported organizations? <i>If "Yes," describe in Part VI the role played by the organization in this regard.</i>		

Part V Type III Non-Functionally Integrated 509(a)(3) Supporting Organizations

1 Check here if the organization satisfied the Integral Part Test as a qualifying trust on Nov. 20, 1970 (explain in Part VI.) **See instructions.** All other Type III non-functionally integrated supporting organizations must complete Sections A through E.

Section A - Adjusted Net Income		(A) Prior Year	(B) Current Year (optional)
1	Net short-term capital gain	1	
2	Recoveries of prior-year distributions	2	
3	Other gross income (see instructions)	3	
4	Add lines 1 through 3	4	
5	Depreciation and depletion	5	
6	Portion of operating expenses paid or incurred for production or collection of gross income or for management, conservation, or maintenance of property held for production of income (see instructions)	6	
7	Other expenses (see instructions)	7	
8	Adjusted Net Income (subtract lines 5, 6, and 7 from line 4)	8	

Section B - Minimum Asset Amount		(A) Prior Year	(B) Current Year (optional)
1	Aggregate fair market value of all non-exempt-use assets (see instructions for short tax year or assets held for part of year):		
a	Average monthly value of securities	1a	
b	Average monthly cash balances	1b	
c	Fair market value of other non-exempt-use assets	1c	
d	Total (add lines 1a, 1b, and 1c)	1d	
e	Discount claimed for blockage or other factors (explain in detail in Part VI):		
2	Acquisition indebtedness applicable to non-exempt-use assets	2	
3	Subtract line 2 from line 1d	3	
4	Cash deemed held for exempt use. Enter 1-1/2% of line 3 (for greater amount, see instructions)	4	
5	Net value of non-exempt-use assets (subtract line 4 from line 3)	5	
6	Multiply line 5 by .035	6	
7	Recoveries of prior-year distributions	7	
8	Minimum Asset Amount (add line 7 to line 6)	8	

Section C - Distributable Amount			Current Year
1	Adjusted net income for prior year (from Section A, line 8, Column A)	1	
2	Enter 85% of line 1	2	
3	Minimum asset amount for prior year (from Section B, line 8, Column A)	3	
4	Enter greater of line 2 or line 3	4	
5	Income tax imposed in prior year	5	
6	Distributable Amount. Subtract line 5 from line 4, unless subject to emergency temporary reduction (see instructions)	6	
7	<input type="checkbox"/> Check here if the current year is the organization's first as a non-functionally integrated Type III supporting organization (see instructions).		

Part V Type III Non-Functionally Integrated 509(a)(3) Supporting Organizations (continued)

Section D - Distributions	Current Year
1 Amounts paid to supported organizations to accomplish exempt purposes	
2 Amounts paid to perform activity that directly furthers exempt purposes of supported organizations, in excess of income from activity	
3 Administrative expenses paid to accomplish exempt purposes of supported organizations	
4 Amounts paid to acquire exempt-use assets	
5 Qualified set-aside amounts (prior IRS approval required)	
6 Other distributions (describe in Part VI). See instructions.	
7 Total annual distributions. Add lines 1 through 6.	
8 Distributions to attentive supported organizations to which the organization is responsive (provide details in Part VI). See instructions.	
9 Distributable amount for 2018 from Section C, line 6	
10 Line 8 amount divided by line 9 amount	

Section E - Distribution Allocations (see instructions)	(i) Excess Distributions	(ii) Underdistributions Pre-2018	(iii) Distributable Amount for 2018
1 Distributable amount for 2018 from Section C, line 6			
2 Underdistributions, if any, for years prior to 2018 (reasonable cause required- explain in Part VI). See instructions.			
3 Excess distributions carryover, if any, to 2018			
a From 2013			
b From 2014			
c From 2015			
d From 2016			
e From 2017			
f Total of lines 3a through e			
g Applied to underdistributions of prior years			
h Applied to 2018 distributable amount			
i Carryover from 2013 not applied (see instructions)			
j Remainder. Subtract lines 3g, 3h, and 3i from 3f.			
4 Distributions for 2018 from Section D, line 7: \$			
a Applied to underdistributions of prior years			
b Applied to 2018 distributable amount			
c Remainder. Subtract lines 4a and 4b from 4.			
5 Remaining underdistributions for years prior to 2018, if any. Subtract lines 3g and 4a from line 2. For result greater than zero, explain in Part VI . See instructions.			
6 Remaining underdistributions for 2018. Subtract lines 3h and 4b from line 1. For result greater than zero, explain in Part VI . See instructions.			
7 Excess distributions carryover to 2019. Add lines 3j and 4c.			
8 Breakdown of line 7:			
a Excess from 2014			
b Excess from 2015			
c Excess from 2016			
d Excess from 2017			
e Excess from 2018			

Schedule A (Form 990 or 990-EZ) 2018

SCHEDULE D
(Form 990)

Department of the Treasury
Internal Revenue Service

Supplemental Financial Statements

▶ **Complete if the organization answered "Yes" on Form 990, Part IV, line 6, 7, 8, 9, 10, 11a, 11b, 11c, 11d, 11e, 11f, 12a, or 12b.**
▶ **Attach to Form 990.**

▶ **Go to www.irs.gov/Form990 for instructions and the latest information.**

OMB No. 1545-0047

2018
Open to Public Inspection

Name of the organization **BUFFALO PRENATAL-PERINATAL NETWORK, INC.** Employer identification number **16-1302764**

Part I Organizations Maintaining Donor Advised Funds or Other Similar Funds or Accounts. Complete if the organization answered "Yes" on Form 990, Part IV, line 6.

	(a) Donor advised funds	(b) Funds and other accounts
1 Total number at end of year		
2 Aggregate value of contributions to (during year)		
3 Aggregate value of grants from (during year)		
4 Aggregate value at end of year		
5 Did the organization inform all donors and donor advisors in writing that the assets held in donor advised funds are the organization's property, subject to the organization's exclusive legal control?		<input type="checkbox"/> Yes <input type="checkbox"/> No
6 Did the organization inform all grantees, donors, and donor advisors in writing that grant funds can be used only for charitable purposes and not for the benefit of the donor or donor advisor, or for any other purpose conferring impermissible private benefit?		<input type="checkbox"/> Yes <input type="checkbox"/> No

Part II Conservation Easements. Complete if the organization answered "Yes" on Form 990, Part IV, line 7.

1 Purpose(s) of conservation easements held by the organization (check all that apply).

Preservation of land for public use (e.g., recreation or education) Preservation of a historically important land area

Protection of natural habitat Preservation of a certified historic structure

Preservation of open space

2 Complete lines 2a through 2d if the organization held a qualified conservation contribution in the form of a conservation easement on the last day of the tax year.

	Held at the End of the Tax Year
a Total number of conservation easements	2a
b Total acreage restricted by conservation easements	2b
c Number of conservation easements on a certified historic structure included in (a)	2c
d Number of conservation easements included in (c) acquired after 7/25/06, and not on a historic structure listed in the National Register	2d

3 Number of conservation easements modified, transferred, released, extinguished, or terminated by the organization during the tax year ▶ _____

4 Number of states where property subject to conservation easement is located ▶ _____

5 Does the organization have a written policy regarding the periodic monitoring, inspection, handling of violations, and enforcement of the conservation easements it holds?

Yes No

6 Staff and volunteer hours devoted to monitoring, inspecting, handling of violations, and enforcing conservation easements during the year ▶ _____

7 Amount of expenses incurred in monitoring, inspecting, handling of violations, and enforcing conservation easements during the year ▶ \$ _____

8 Does each conservation easement reported on line 2(d) above satisfy the requirements of section 170(h)(4)(B)(i) and section 170(h)(4)(B)(ii)?

Yes No

9 In Part XIII, describe how the organization reports conservation easements in its revenue and expense statement, and balance sheet, and include, if applicable, the text of the footnote to the organization's financial statements that describes the organization's accounting for conservation easements.

Part III Organizations Maintaining Collections of Art, Historical Treasures, or Other Similar Assets. Complete if the organization answered "Yes" on Form 990, Part IV, line 8.

1a If the organization elected, as permitted under SFAS 116 (ASC 958), not to report in its revenue statement and balance sheet works of art, historical treasures, or other similar assets held for public exhibition, education, or research in furtherance of public service, provide, in Part XIII, the text of the footnote to its financial statements that describes these items.

b If the organization elected, as permitted under SFAS 116 (ASC 958), to report in its revenue statement and balance sheet works of art, historical treasures, or other similar assets held for public exhibition, education, or research in furtherance of public service, provide the following amounts relating to these items:

(i) Revenue included on Form 990, Part VIII, line 1

▶ \$ _____

(ii) Assets included in Form 990, Part X

▶ \$ _____

2 If the organization received or held works of art, historical treasures, or other similar assets for financial gain, provide the following amounts required to be reported under SFAS 116 (ASC 958) relating to these items:

a Revenue included on Form 990, Part VIII, line 1

▶ \$ _____

b Assets included in Form 990, Part X

▶ \$ _____

LHA For Paperwork Reduction Act Notice, see the Instructions for Form 990. Schedule D (Form 990) 2018

Part III Organizations Maintaining Collections of Art, Historical Treasures, or Other Similar Assets (continued)

3 Using the organization's acquisition, accession, and other records, check any of the following that are a significant use of its collection items (check all that apply):

- a Public exhibition
- b Scholarly research
- c Preservation for future generations
- d Loan or exchange programs
- e Other _____

4 Provide a description of the organization's collections and explain how they further the organization's exempt purpose in Part XIII.

5 During the year, did the organization solicit or receive donations of art, historical treasures, or other similar assets to be sold to raise funds rather than to be maintained as part of the organization's collection? Yes No

Part IV Escrow and Custodial Arrangements. Complete if the organization answered "Yes" on Form 990, Part IV, line 9, or reported an amount on Form 990, Part X, line 21.

1a Is the organization an agent, trustee, custodian or other intermediary for contributions or other assets not included on Form 990, Part X? Yes No

b If "Yes," explain the arrangement in Part XIII and complete the following table:

	Amount
1c	Beginning balance
1d	Additions during the year
1e	Distributions during the year
1f	Ending balance

2a Did the organization include an amount on Form 990, Part X, line 21, for escrow or custodial account liability? Yes No

b If "Yes," explain the arrangement in Part XIII. Check here if the explanation has been provided on Part XIII

Part V Endowment Funds. Complete if the organization answered "Yes" on Form 990, Part IV, line 10.

	(a) Current year	(b) Prior year	(c) Two years back	(d) Three years back	(e) Four years back
1a	Beginning of year balance				
b	Contributions				
c	Net investment earnings, gains, and losses				
d	Grants or scholarships				
e	Other expenditures for facilities and programs				
f	Administrative expenses				
g	End of year balance				

2 Provide the estimated percentage of the current year end balance (line 1g, column (a)) held as:

- a Board designated or quasi-endowment %
- b Permanent endowment %
- c Temporarily restricted endowment %

The percentages on lines 2a, 2b, and 2c should equal 100%.

3a Are there endowment funds not in the possession of the organization that are held and administered for the organization by:

- (i) unrelated organizations
- (ii) related organizations

	Yes	No
3a(i)		
3a(ii)		
3b		

b If "Yes" on line 3a(ii), are the related organizations listed as required on Schedule R?

4 Describe in Part XIII the intended uses of the organization's endowment funds.

Part VI Land, Buildings, and Equipment.

Complete if the organization answered "Yes" on Form 990, Part IV, line 11a. See Form 990, Part X, line 10.

Description of property	(a) Cost or other basis (investment)	(b) Cost or other basis (other)	(c) Accumulated depreciation	(d) Book value
1a Land				
b Buildings				
c Leasehold improvements				
d Equipment		332,357.	257,799.	74,558.
e Other				

Total. Add lines 1a through 1e. (Column (d) must equal Form 990, Part X, column (B), line 10c.) 74,558.

Part VII Investments - Other Securities.

Complete if the organization answered "Yes" on Form 990, Part IV, line 11b. See Form 990, Part X, line 12.

(a) Description of security or category (including name of security)	(b) Book value	(c) Method of valuation: Cost or end-of-year market value
(1) Financial derivatives		
(2) Closely-held equity interests		
(3) Other		
(A)		
(B)		
(C)		
(D)		
(E)		
(F)		
(G)		
(H)		
Total. (Col. (b) must equal Form 990, Part X, col. (B) line 12.) ▶		

Part VIII Investments - Program Related.

Complete if the organization answered "Yes" on Form 990, Part IV, line 11c. See Form 990, Part X, line 13.

(a) Description of investment	(b) Book value	(c) Method of valuation: Cost or end-of-year market value
(1)		
(2)		
(3)		
(4)		
(5)		
(6)		
(7)		
(8)		
(9)		
Total. (Col. (b) must equal Form 990, Part X, col. (B) line 13.) ▶		

Part IX Other Assets.

Complete if the organization answered "Yes" on Form 990, Part IV, line 11d. See Form 990, Part X, line 15.

(a) Description	(b) Book value
(1)	
(2)	
(3)	
(4)	
(5)	
(6)	
(7)	
(8)	
(9)	
Total. (Column (b) must equal Form 990, Part X, col. (B) line 15.) ▶	

Part X Other Liabilities.

Complete if the organization answered "Yes" on Form 990, Part IV, line 11e or 11f. See Form 990, Part X, line 25.

1. (a) Description of liability	(b) Book value
(1) Federal income taxes	
(2) REFUNDABLE ADVANCES	574,986.
(3)	
(4)	
(5)	
(6)	
(7)	
(8)	
(9)	
Total. (Column (b) must equal Form 990, Part X, col. (B) line 25.) ▶	574,986.

2. Liability for uncertain tax positions. In Part XIII, provide the text of the footnote to the organization's financial statements that reports the organization's liability for uncertain tax positions under FIN 48 (ASC 740). Check here if the text of the footnote has been provided in Part XIII

Part XI Reconciliation of Revenue per Audited Financial Statements With Revenue per Return.

Complete if the organization answered "Yes" on Form 990, Part IV, line 12a.

1	Total revenue, gains, and other support per audited financial statements		1	3,118,604.
2	Amounts included on line 1 but not on Form 990, Part VIII, line 12:			
a	Net unrealized gains (losses) on investments	2a		
b	Donated services and use of facilities	2b		
c	Recoveries of prior year grants	2c		
d	Other (Describe in Part XIII.)	2d	14,402.	
e	Add lines 2a through 2d		2e	14,402.
3	Subtract line 2e from line 1		3	3,104,202.
4	Amounts included on Form 990, Part VIII, line 12, but not on line 1:			
a	Investment expenses not included on Form 990, Part VIII, line 7b	4a		
b	Other (Describe in Part XIII.)	4b		
c	Add lines 4a and 4b		4c	0.
5	Total revenue. Add lines 3 and 4c . (This must equal Form 990, Part I, line 12.)		5	3,104,202.

Part XII Reconciliation of Expenses per Audited Financial Statements With Expenses per Return.

Complete if the organization answered "Yes" on Form 990, Part IV, line 12a.

1	Total expenses and losses per audited financial statements		1	3,151,961.
2	Amounts included on line 1 but not on Form 990, Part IX, line 25:			
a	Donated services and use of facilities	2a		
b	Prior year adjustments	2b		
c	Other losses	2c		
d	Other (Describe in Part XIII.)	2d	14,402.	
e	Add lines 2a through 2d		2e	14,402.
3	Subtract line 2e from line 1		3	3,137,559.
4	Amounts included on Form 990, Part IX, line 25, but not on line 1:			
a	Investment expenses not included on Form 990, Part VIII, line 7b	4a		
b	Other (Describe in Part XIII.)	4b		
c	Add lines 4a and 4b		4c	0.
5	Total expenses. Add lines 3 and 4c . (This must equal Form 990, Part I, line 18.)		5	3,137,559.

Part XIII Supplemental Information.

Provide the descriptions required for Part II, lines 3, 5, and 9; Part III, lines 1a and 4; Part IV, lines 1b and 2b; Part V, line 4; Part X, line 2; Part XI, lines 2d and 4b; and Part XII, lines 2d and 4b. Also complete this part to provide any additional information.

PART XI, LINE 2D - OTHER ADJUSTMENTS:

SPECIAL EVENTS EXPENSE

PART XII, LINE 2D - OTHER ADJUSTMENTS:

SPECIAL EVENTS EXPENSE

Part II Fundraising Events. Complete if the organization answered "Yes" on Form 990, Part IV, line 18, or reported more than \$15,000 of fundraising event contributions and gross income on Form 990-EZ, lines 1 and 6b. List events with gross receipts greater than \$5,000.

		(a) Event #1	(b) Event #2	(c) Other events	(d) Total events (add col. (a) through col. (c))
		GREAT BABY BEGINNINGS		NONE	
		(event type)	(event type)	(total number)	
Revenue	1	Gross receipts	60,311.		60,311.
	2	Less: Contributions	3,120.		3,120.
	3	Gross income (line 1 minus line 2)	57,191.		57,191.
Direct Expenses	4	Cash prizes			
	5	Noncash prizes	255.		255.
	6	Rent/facility costs			
	7	Food and beverages	11,436.		11,436.
	8	Entertainment			
	9	Other direct expenses	2,711.		2,711.
	10	Direct expense summary. Add lines 4 through 9 in column (d)			
11	Net income summary. Subtract line 10 from line 3, column (d)				42,789.

Part III Gaming. Complete if the organization answered "Yes" on Form 990, Part IV, line 19, or reported more than \$15,000 on Form 990-EZ, line 6a.

		(a) Bingo	(b) Pull tabs/instant bingo/progressive bingo	(c) Other gaming	(d) Total gaming (add col. (a) through col. (c))	
Revenue	1	Gross revenue				
Direct Expenses	2	Cash prizes				
	3	Noncash prizes				
	4	Rent/facility costs				
	5	Other direct expenses				
	6	Volunteer labor	<input type="checkbox"/> Yes _____ % <input type="checkbox"/> No	<input type="checkbox"/> Yes _____ % <input type="checkbox"/> No	<input type="checkbox"/> Yes _____ % <input type="checkbox"/> No	
	7	Direct expense summary. Add lines 2 through 5 in column (d)				
	8	Net gaming income summary. Subtract line 7 from line 1, column (d)				

9 Enter the state(s) in which the organization conducts gaming activities: _____

a Is the organization licensed to conduct gaming activities in each of these states? Yes No

b If "No," explain: _____

10a Were any of the organization's gaming licenses revoked, suspended, or terminated during the tax year? Yes No

b If "Yes," explain: _____

- 11** Does the organization conduct gaming activities with nonmembers? Yes No
- 12** Is the organization a grantor, beneficiary or trustee of a trust, or a member of a partnership or other entity formed to administer charitable gaming? Yes No
- 13** Indicate the percentage of gaming activity conducted in:
- | | | |
|--------------------------------------|------------|---|
| a The organization's facility | 13a | % |
| b An outside facility | 13b | % |
- 14** Enter the name and address of the person who prepares the organization's gaming/special events books and records:

Name ▶ _____

Address ▶ _____

- 15a** Does the organization have a contract with a third party from whom the organization receives gaming revenue? Yes No
- b** If "Yes," enter the amount of gaming revenue received by the organization ▶ \$ _____ and the amount of gaming revenue retained by the third party ▶ \$ _____
- c** If "Yes," enter name and address of the third party:

Name ▶ _____

Address ▶ _____

16 Gaming manager information:

Name ▶ _____

Gaming manager compensation ▶ \$ _____

Description of services provided ▶ _____

Director/officer Employee Independent contractor

17 Mandatory distributions:

- a** Is the organization required under state law to make charitable distributions from the gaming proceeds to retain the state gaming license? Yes No
- b** Enter the amount of distributions required under state law to be distributed to other exempt organizations or spent in the organization's own exempt activities during the tax year ▶ \$ _____

Part IV Supplemental Information. Provide the explanations required by Part I, line 2b, columns (iii) and (v); and Part III, lines 9, 9b, 10b, 15b, 15c, 16, and 17b, as applicable. Also provide any additional information. See instructions.

SCHEDULE O
(Form 990 or 990-EZ)

Department of the Treasury
Internal Revenue Service

Supplemental Information to Form 990 or 990-EZ

Complete to provide information for responses to specific questions on
Form 990 or 990-EZ or to provide any additional information.

▶ Attach to Form 990 or 990-EZ.

▶ Go to www.irs.gov/Form990 for the latest information.

OMB No. 1545-0047

2018

Open to Public
Inspection

Name of the organization

BUFFALO PRENATAL-PERINATAL NETWORK, INC.

Employer identification number

16-1302764

FORM 990, PART I, LINE 1, DESCRIPTION OF ORGANIZATION MISSION:

SPONSOR AND CONDUCT MEETINGS AND LECTURES FOR THE PUBLIC. RECRUIT AND ASSIST LOW INCOME FAMILIES FOR THE PROGRAM.

FORM 990, PART III, LINE 4D, OTHER PROGRAM SERVICES:

COORDINATE PUBLIC EDUCATION WITH RESPECT TO PRENATAL-PERINATAL, PRECONCEPTION, AND POSTNATAL CARE. SPONSOR AND CONDUCT MEETINGS AND LECTURES FOR THE PUBLIC. RECRUIT AND ASSIST LOW INCOME FAMILIES FOR THE PROGRAM.

EXPENSES \$ 345,374. INCLUDING GRANTS OF \$ 0. REVENUE \$ 0.

FORM 990, PART VI, SECTION B, LINE 11B:

A DRAFT OF FORM 990 WAS CIRCULATED TO THE BOARD OF DIRECTORS FOR THEIR REVIEW AND COMMENT PRIOR TO FILING.

FORM 990, PART VI, SECTION B, LINE 12C:

THE COMPANY REQUIRES ANNUAL CONFLICT OF INTEREST FORMS TO BE COMPLETED BY ALL BOARD MEMBERS.

FORM 990, PART VI, SECTION B, LINE 15A:

THE CEO'S SALARY IS RECOMMENDED BY THE PERSONNEL COMMITTEE OF THE BOARD AND APPROVED BY THE FULL BOARD ANNUALLY. THE COMMITTEE AND BOARD CONSIDER THE ORGANIZATION'S OPERATING RESULTS, BUDGETARY CONSTRAINTS, AND THE CEO'S PERFORMANCE WHEN DETERMINING ANNUAL COMPENSATION.

FORM 990, PART VI, SECTION C, LINE 19:

LHA For Paperwork Reduction Act Notice, see the Instructions for Form 990 or 990-EZ.

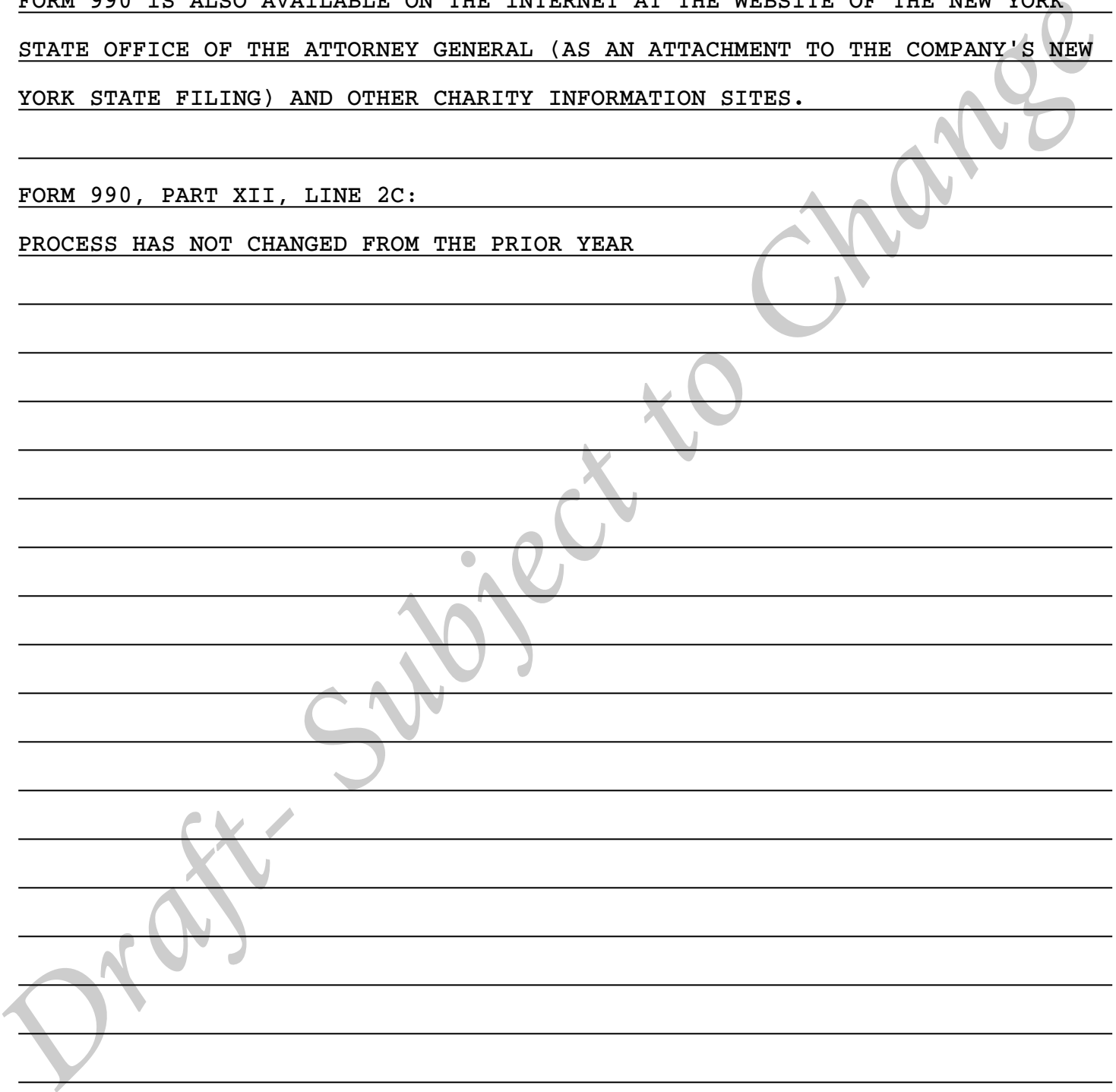
Schedule O (Form 990 or 990-EZ) (2018)

Name of the organization BUFFALO PRENATAL-PERINATAL NETWORK, INC.	Employer identification number 16-1302764
--	--

THE COMPANY'S GOVERNING DOCUMENTS AND ANNUAL FORM 990 ARE AVAILABLE UPON REQUEST AT ITS ADMINISTRATIVE OFFICE (ADDRESS ON PAGE 1 OF FORM 990). THE FORM 990 IS ALSO AVAILABLE ON THE INTERNET AT THE WEBSITE OF THE NEW YORK STATE OFFICE OF THE ATTORNEY GENERAL (AS AN ATTACHMENT TO THE COMPANY'S NEW YORK STATE FILING) AND OTHER CHARITY INFORMATION SITES.

FORM 990, PART XII, LINE 2C:

PROCESS HAS NOT CHANGED FROM THE PRIOR YEAR



Form **990-W**
(Worksheet)

**Estimated Tax on Unrelated Business Taxable
Income for Tax-Exempt Organizations**

OMB No. 1545-0976

(and on Investment Income for Private Foundations) FORM 990-T

2019

Department of the Treasury
Internal Revenue Service

▶ Go to www.irs.gov/Form990W for instructions and the latest information.
▶ Keep for your records. Do not send to the Internal Revenue Service.

1	Unrelated business taxable income expected in the tax year	1	
2	Tax on the amount on line 1. See instructions for tax computation	2	
3	Alternative minimum tax for trusts. See instructions	3	
4	Total. Add lines 2 and 3	4	
5	Estimated tax credits. See instructions	5	
6	Subtract line 5 from line 4	6	
7	Other taxes. See instructions	7	
8	Total. Add lines 6 and 7	8	
9	Credit for federal tax paid on fuels. See instructions	9	
10a	Subtract line 9 from line 8. Note: If less than \$500, the organization is not required to make estimated tax payments. Private foundations, see instructions	10a	
b	Enter the tax shown on the 2018 return. See instructions. Caution: If zero or the tax year was for less than 12 months, skip this line and enter the amount from line 10a on line 10c	10b	4,673.
c	2019 Estimated Tax. Enter the smaller of line 10a or line 10b. If the organization is required to skip line 10b, enter the amount from line 10a on line 10c	10c	ADJUSTED TO 4,676.

		(a)	(b)	(c)	(d)	
11	Installment due dates. See instructions	11	01/15/20	03/16/20	06/15/20	09/15/20
12	Required installments. Enter 25% of line 10c in columns (a) through (d). But see instructions if the organization uses the annualized income installment method, the adjusted seasonal installment method, or is a "large organization."	12	1,169.	1,169.	1,169.	1,169.
13	2018 Overpayment. See instructions	13				
14	Payment due (Subtract line 13 from line 12)	14	1,169.	1,169.	1,169.	1,169.

LHA For Paperwork Reduction Act Notice, see instructions.

Form **990-W** (2019)

Exempt Organization Business Income Tax Return (and proxy tax under section 6033(e))

For calendar year 2018 or other tax year beginning OCT 1, 2018, and ending SEP 30, 2019

2018

Department of the Treasury
Internal Revenue Service

▶ Go to www.irs.gov/Form990T for instructions and the latest information.
▶ Do not enter SSN numbers on this form as it may be made public if your organization is a 501(c)(3).

Open to Public Inspection for
501(c)(3) Organizations Only

<p>A <input type="checkbox"/> Check box if address changed</p> <p>B Exempt under section <input checked="" type="checkbox"/> 501(c)(3)) <input type="checkbox"/> 408(e) <input type="checkbox"/> 220(e) <input type="checkbox"/> 408A <input type="checkbox"/> 530(a) <input type="checkbox"/> 529(a)</p>	Print or Type	<p>Name of organization (<input type="checkbox"/> Check box if name changed and see instructions.) BUFFALO PRENATAL-PERINATAL NETWORK, INC.</p> <p>Number, street, and room or suite no. If a P.O. box, see instructions. 625 DELAWARE AVENUE, NO. 410</p> <p>City or town, state or province, country, and ZIP or foreign postal code BUFFALO, NY 14202</p>	<p>D Employer identification number (Employees' trust, see instructions.) 16-1302764</p> <p>E Unrelated business activity code (See instructions.) 624100</p>
--	---------------------	---	---

C Book value of all assets at end of year 1,217,134.

F Group exemption number (See instructions.) ▶

G Check organization type ▶ 501(c) corporation 501(c) trust 401(a) trust Other trust

H Enter the number of the organization's unrelated trades or businesses. ▶ 1 Describe the only (or first) unrelated trade or business here ▶ SEE STATEMENT 1. If only one, complete Parts I-V. If more than one, describe the first in the blank space at the end of the previous sentence, complete Parts I and II, complete a Schedule M for each additional trade or business, then complete Parts III-V.

I During the tax year, was the corporation a subsidiary in an affiliated group or a parent-subsidiary controlled group? Yes No
If "Yes," enter the name and identifying number of the parent corporation. ▶

J The books are in care of ▶ MICHAEL ALOIAN Telephone number ▶ 716-884-6711

Part I Unrelated Trade or Business Income	(A) Income	(B) Expenses	(C) Net
1 a Gross receipts or sales			
b Less returns and allowances			
c Balance	1c		
2 Cost of goods sold (Schedule A, line 7)	2		
3 Gross profit. Subtract line 2 from line 1c	3		
4 a Capital gain net income (attach Schedule D)	4a		
b Net gain (loss) (Form 4797, Part II, line 17) (attach Form 4797)	4b		
c Capital loss deduction for trusts	4c		
5 Income (loss) from a partnership or an S corporation (attach statement)	5		
6 Rent income (Schedule C)	6		
7 Unrelated debt-financed income (Schedule E)	7		
8 Interest, annuities, royalties, and rents from a controlled organization (Schedule F)	8		
9 Investment income of a section 501(c)(7), (9), or (17) organization (Schedule G)	9		
10 Exploited exempt activity income (Schedule I)	10		
11 Advertising income (Schedule J)	11		
12 Other income (See instructions; attach schedule)	12		
13 Total. Combine lines 3 through 12	13	0.	

Part II Deductions Not Taken Elsewhere (See instructions for limitations on deductions.)
(Except for contributions, deductions must be directly connected with the unrelated business income.)

14 Compensation of officers, directors, and trustees (Schedule K)	14	
15 Salaries and wages	15	
16 Repairs and maintenance	16	
17 Bad debts	17	
18 Interest (attach schedule) (see instructions)	18	
19 Taxes and licenses	19	
20 Charitable contributions (See instructions for limitation rules)	20	
21 Depreciation (attach Form 4562)	21	
22 Less depreciation claimed on Schedule A and elsewhere on return	22a	22b
23 Depletion	23	
24 Contributions to deferred compensation plans	24	
25 Employee benefit programs	25	
26 Excess exempt expenses (Schedule I)	26	
27 Excess readership costs (Schedule J)	27	
28 Other deductions (attach schedule)	28	
29 Total deductions. Add lines 14 through 28	29	0.
30 Unrelated business taxable income before net operating loss deduction. Subtract line 29 from line 13	30	0.
31 Deduction for net operating loss arising in tax years beginning on or after January 1, 2018 (see instructions)	31	
32 Unrelated business taxable income. Subtract line 31 from line 30	32	0.

Part III Total Unrelated Business Taxable Income		
33	Total of unrelated business taxable income computed from all unrelated trades or businesses (see instructions)	33 0.
34	Amounts paid for disallowed fringes	34 23,254.
35	Deduction for net operating loss arising in tax years beginning before January 1, 2018 (see instructions)	35
36	Total of unrelated business taxable income before specific deduction. Subtract line 35 from the sum of lines 33 and 34	36 23,254.
37	Specific deduction (Generally \$1,000, but see line 37 instructions for exceptions)	37 1,000.
38	Unrelated business taxable income. Subtract line 37 from line 36. If line 37 is greater than line 36, enter the smaller of zero or line 36	38 22,254.

Part IV Tax Computation		
39	Organizations Taxable as Corporations. Multiply line 38 by 21% (0.21)	39 4,673.
40	Trusts Taxable at Trust Rates. See instructions for tax computation. Income tax on the amount on line 38 from: <input type="checkbox"/> Tax rate schedule or <input type="checkbox"/> Schedule D (Form 1041)	40
41	Proxy tax. See instructions	41
42	Alternative minimum tax (trusts only)	42
43	Tax on Noncompliant Facility Income. See instructions	43
44	Total. Add lines 41, 42, and 43 to line 39 or 40, whichever applies	44 4,673.

Part V Tax and Payments		
45a	Foreign tax credit (corporations attach Form 1118; trusts attach Form 1116)	45a
b	Other credits (see instructions)	45b
c	General business credit. Attach Form 3800	45c
d	Credit for prior year minimum tax (attach Form 8801 or 8827)	45d
e	Total credits. Add lines 45a through 45d	45e
46	Subtract line 45e from line 44	46 4,673.
47	Other taxes. Check if from: <input type="checkbox"/> Form 4255 <input type="checkbox"/> Form 8611 <input type="checkbox"/> Form 8697 <input type="checkbox"/> Form 8866 <input type="checkbox"/> Other (attach schedule)	47
48	Total tax. Add lines 46 and 47 (see instructions)	48 4,673.
49	2018 net 965 tax liability paid from Form 965-A or Form 965-B, Part II, column (k), line 2	49 0.
50a	Payments: A 2017 overpayment credited to 2018	50a
b	2018 estimated tax payments	50b 2,310.
c	Tax deposited with Form 8868	50c
d	Foreign organizations: Tax paid or withheld at source (see instructions)	50d
e	Backup withholding (see instructions)	50e
f	Credit for small employer health insurance premiums (attach Form 8941)	50f
g	Other credits, adjustments, and payments: <input type="checkbox"/> Form 2439 <input type="checkbox"/> Form 4136 <input type="checkbox"/> Other Total	50g
51	Total payments. Add lines 50a through 50g	51 2,310.
52	Estimated tax penalty (see instructions). Check if Form 2220 is attached <input checked="" type="checkbox"/>	52 64.
53	Tax due. If line 51 is less than the total of lines 48, 49, and 52, enter amount owed	53 2,427.
54	Overpayment. If line 51 is larger than the total of lines 48, 49, and 52, enter amount overpaid	54
55	Enter the amount of line 54 you want: Credited to 2019 estimated tax <input type="checkbox"/> Refunded <input type="checkbox"/>	55

Part VI Statements Regarding Certain Activities and Other Information (see instructions)		
56	At any time during the 2018 calendar year, did the organization have an interest in or a signature or other authority over a financial account (bank, securities, or other) in a foreign country? If "Yes," the organization may have to file FinCEN Form 114, Report of Foreign Bank and Financial Accounts. If "Yes," enter the name of the foreign country here	Yes No <input type="checkbox"/> <input type="checkbox"/>
57	During the tax year, did the organization receive a distribution from, or was it the grantor of, or transferor to, a foreign trust? If "Yes," see instructions for other forms the organization may have to file.	<input type="checkbox"/> <input checked="" type="checkbox"/>
58	Enter the amount of tax-exempt interest received or accrued during the tax year	\$

Sign Here Under penalties of perjury, I declare that I have examined this return, including accompanying schedules and statements, and to the best of my knowledge and belief, it is true, correct, and complete. Declaration of preparer (other than taxpayer) is based on all information of which preparer has any knowledge.

Signature of officer _____ **Date** _____ **CHIEF EXECUTIVE OFFICER** **Title**

May the IRS discuss this return with the preparer shown below (see instructions)?	<input checked="" type="checkbox"/> Yes	<input type="checkbox"/> No
---	---	-----------------------------

Paid Preparer Use Only	Print/Type preparer's name	Preparer's signature	Date	Check <input type="checkbox"/> if self-employed	PTIN
	JUSTIN N. REID				P01321869
	Firm's name BONADIO & CO., LLP	Firm's EIN 16-1131146			
	Firm's address 100 CORPORATE PARKWAY, SUITE 200 AMHERST, NY 14226			Phone no. (716) 250-6600	

Schedule A - Cost of Goods Sold. Enter method of inventory valuation ► **N/A**

1	Inventory at beginning of year	1		6	Inventory at end of year	6	
2	Purchases	2					
3	Cost of labor	3		7	Cost of goods sold. Subtract line 6 from line 5. Enter here and in Part I, line 2	7	
4a	Additional section 263A costs (attach schedule)	4a		8	Do the rules of section 263A (with respect to property produced or acquired for resale) apply to the organization?		Yes No
b	Other costs (attach schedule)	4b					
5	Total. Add lines 1 through 4b	5					

Schedule C - Rent Income (From Real Property and Personal Property Leased With Real Property)

(see instructions)

1. Description of property

(1)	
(2)	
(3)	
(4)	

2. Rent received or accrued

(a) From personal property (if the percentage of rent for personal property is more than 10% but not more than 50%)	(b) From real and personal property (if the percentage of rent for personal property exceeds 50% or if the rent is based on profit or income)	3(a) Deductions directly connected with the income in columns 2(a) and 2(b) (attach schedule)
(1)		
(2)		
(3)		
(4)		
Total	0.	Total

(c) **Total income.** Add totals of columns 2(a) and 2(b). Enter here and on page 1, Part I, line 6, column (A) ►

(b) **Total deductions.** Enter here and on page 1, Part I, line 6, column (B) ... ► 0.

Schedule E - Unrelated Debt-Financed Income (see instructions)

1. Description of debt-financed property	2. Gross income from or allocable to debt-financed property	3. Deductions directly connected with or allocable to debt-financed property		
		(a) Straight line depreciation (attach schedule)	(b) Other deductions (attach schedule)	
(1)				
(2)				
(3)				
(4)				
4. Amount of average acquisition debt on or allocable to debt-financed property (attach schedule)	5. Average adjusted basis of or allocable to debt-financed property (attach schedule)	6. Column 4 divided by column 5	7. Gross income reportable (column 2 x column 6)	8. Allocable deductions (column 6 x total of columns 3(a) and 3(b))
(1)		%		
(2)		%		
(3)		%		
(4)		%		
Totals		Enter here and on page 1, Part I, line 7, column (A).		Enter here and on page 1, Part I, line 7, column (B).
Total dividends-received deductions included in column 8		0.		0.
				0.

Form 990-T (2018)

1. Name of controlled organization	2. Employer identification number	Exempt Controlled Organizations			
		3. Net unrelated income (loss) (see instructions)	4. Total of specified payments made	5. Part of column 4 that is included in the controlling organization's gross income	6. Deductions directly connected with income in column 5
(1)					
(2)					
(3)					
(4)					

Nonexempt Controlled Organizations					
7. Taxable income	8. Net unrelated income (loss) (see instructions)	9. Total of specified payments made	10. Part of column 9 that is included in the controlling organization's gross income	11. Deductions directly connected with income in column 10	
(1)					
(2)					
(3)					
(4)					
			Add columns 5 and 10. Enter here and on page 1, Part I, line 8, column (A).	Add columns 6 and 11. Enter here and on page 1, Part I, line 8, column (B).	
Totals			0.	0.	

Schedule G - Investment Income of a Section 501(c)(7), (9), or (17) Organization
(see instructions)

1. Description of income	2. Amount of income	3. Deductions directly connected (attach schedule)	4. Set-asides (attach schedule)	5. Total deductions and set-asides (col. 3 plus col. 4)
(1)				
(2)				
(3)				
(4)				
		Enter here and on page 1, Part I, line 9, column (A).		Enter here and on page 1, Part I, line 9, column (B).
Totals		0.		0.

Schedule I - Exploited Exempt Activity Income, Other Than Advertising Income
(see instructions)

1. Description of exploited activity	2. Gross unrelated business income from trade or business	3. Expenses directly connected with production of unrelated business income	4. Net income (loss) from unrelated trade or business (column 2 minus column 3). If a gain, compute cols. 5 through 7.	5. Gross income from activity that is not unrelated business income	6. Expenses attributable to column 5	7. Excess exempt expenses (column 6 minus column 5, but not more than column 4).
(1)						
(2)						
(3)						
(4)						
	Enter here and on page 1, Part I, line 10, col. (A).	Enter here and on page 1, Part I, line 10, col. (B).				Enter here and on page 1, Part II, line 26.
Totals	0.	0.				0.

Schedule J - Advertising Income (see instructions)

Part I Income From Periodicals Reported on a Consolidated Basis

1. Name of periodical	2. Gross advertising income	3. Direct advertising costs	4. Advertising gain or (loss) (col. 2 minus col. 3). If a gain, compute cols. 5 through 7.	5. Circulation income	6. Readership costs	7. Excess readership costs (column 6 minus column 5, but not more than column 4).
(1)						
(2)						
(3)						
(4)						
Totals (carry to Part II, line (5))	0.	0.				0.

Part II **Income From Periodicals Reported on a Separate Basis** (For each periodical listed in Part II, fill in columns 2 through 7 on a line-by-line basis.)

1. Name of periodical	2. Gross advertising income	3. Direct advertising costs	4. Advertising gain or (loss) (col. 2 minus col. 3). If a gain, compute cols. 5 through 7.	5. Circulation income	6. Readership costs	7. Excess readership costs (column 6 minus column 5, but not more than column 4).
(1)						
(2)						
(3)						
(4)						
Totals from Part I	0.	0.				0.
Totals, Part II (lines 1-5)	0. <small>Enter here and on page 1, Part I, line 11, col. (A).</small>	0. <small>Enter here and on page 1, Part I, line 11, col. (B).</small>				0. <small>Enter here and on page 1, Part II, line 27.</small>

Schedule K - Compensation of Officers, Directors, and Trustees (see instructions)

1. Name	2. Title	3. Percent of time devoted to business	4. Compensation attributable to unrelated business
(1)		%	
(2)		%	
(3)		%	
(4)		%	
Total. Enter here and on page 1, Part II, line 14			0.

Form **990-T** (2018)

Draft - Subject to Change

FORM 990-T DESCRIPTION OF ORGANIZATION'S PRIMARY UNRELATED STATEMENT 1
BUSINESS ACTIVITY

COORDINATE PUBLIC EDUCATION WITH RESPECT TO PRENATAL-PERINATAL,
PRECONCEPTION, AND POSTNATAL CARE.

TO FORM 990-T, PAGE 1

Draft- Subject to Change

Name **BUFFALO PRENATAL-PERINATAL NETWORK, INC.** Employer identification number **16-1302764**

Note: Generally, the corporation is not required to file Form 2220 (see Part II below for exceptions) because the IRS will figure any penalty owed and bill the corporation. However, the corporation may still use Form 2220 to figure the penalty. If so, enter the amount from page 2, line 38, on the estimated tax penalty line of the corporation's income tax return, but **do not** attach Form 2220.

Part I Required Annual Payment			
1	Total tax (see instructions)	1	4,673.
2a	Personal holding company tax (Schedule PH (Form 1120), line 26) included on line 1	2a	
2b	Look-back interest included on line 1 under section 460(b)(2) for completed long-term contracts or section 167(g) for depreciation under the income forecast method	2b	
2c	Credit for federal tax paid on fuels (see instructions)	2c	
2d	Total. Add lines 2a through 2c	2d	
3	Subtract line 2d from line 1. If the result is less than \$500, do not complete or file this form. The corporation does not owe the penalty	3	4,673.
4	Enter the tax shown on the corporation's 2017 income tax return. See instructions. Caution: If the tax is zero or the tax year was for less than 12 months, skip this line and enter the amount from line 3 on line 5	4	3,412.
5	Required annual payment. Enter the smaller of line 3 or line 4. If the corporation is required to skip line 4, enter the amount from line 3	5	3,412.

Part II Reasons for Filing - Check the boxes below that apply. If any boxes are checked, the corporation **must** file Form 2220 even if it does not owe a penalty. See instructions.

6 The corporation is using the adjusted seasonal installment method.

7 The corporation is using the annualized income installment method.

8 The corporation is a "large corporation" figuring its first required installment based on the prior year's tax.

Part III Figuring the Underpayment		(a)	(b)	(c)	(d)	
9	Installment due dates. Enter in columns (a) through (d) the 15th day of the 4th (Form 990-PF filers: Use 5th month), 6th, 9th, and 12th months of the corporation's tax year	9	01/15/19	03/15/19	06/15/19	09/15/19
10	Required installments. If the box on line 6 and/or line 7 above is checked, enter the amounts from Sch A, line 38. If the box on line 8 (but not 6 or 7) is checked, see instructions for the amounts to enter. If none of these boxes are checked, enter 25% (0.25) of line 5 above in each column	10	853.	853.	853.	853.
11	Estimated tax paid or credited for each period. For column (a) only, enter the amount from line 11 on line 15. See instructions	11				2,310.
Complete lines 12 through 18 of one column before going to the next column.						
12	Enter amount, if any, from line 18 of the preceding column	12				
13	Add lines 11 and 12	13				2,310.
14	Add amounts on lines 16 and 17 of the preceding column	14		853.	1,706.	2,559.
15	Subtract line 14 from line 13. If zero or less, enter -0-	15	0.	0.	0.	0.
16	If the amount on line 15 is zero, subtract line 13 from line 14. Otherwise, enter -0-	16		853.	1,706.	
17	Underpayment. If line 15 is less than or equal to line 10, subtract line 15 from line 10. Then go to line 12 of the next column. Otherwise, go to line 18	17	853.	853.	853.	853.
18	Overpayment. If line 10 is less than line 15, subtract line 10 from line 15. Then go to line 12 of the next column	18				

Go to Part IV on page 2 to figure the penalty. Do not go to Part IV if there are no entries on line 17 - no penalty is owed.

Part IV Figuring the Penalty

	(a)	(b)	(c)	(d)
19 Enter the date of payment or the 15th day of the 4th month after the close of the tax year, whichever is earlier. (C corporations with tax years ending June 30 and S corporations: Use 3rd month instead of 4th month. Form 990-PF and Form 990-T filers: Use 5th month instead of 4th month.) See instructions	19			
20 Number of days from due date of installment on line 9 to the date shown on line 19	20			
21 Number of days on line 20 after 4/15/2018 and before 7/1/2018	21			
22 Underpayment on line 17 x $\frac{\text{Number of days on line 21} \times 5\% (0.05)}{365}$	22 \$	\$	\$	\$
23 Number of days on line 20 after 06/30/2018 and before 10/1/2018	23			
24 Underpayment on line 17 x $\frac{\text{Number of days on line 23} \times 5\% (0.05)}{365}$	24 \$	\$	\$	\$
25 Number of days on line 20 after 9/30/2018 and before 1/1/2019	25			
26 Underpayment on line 17 x $\frac{\text{Number of days on line 25} \times 5\% (0.05)}{365}$	26 \$	\$	\$	\$
27 Number of days on line 20 after 12/31/2018 and before 4/1/2019	27	SEE ATTACHED WORKSHEET		
28 Underpayment on line 17 x $\frac{\text{Number of days on line 27} \times 6\% (0.06)}{365}$	28 \$	\$	\$	\$
29 Number of days on line 20 after 3/31/2019 and before 7/1/2019	29			
30 Underpayment on line 17 x $\frac{\text{Number of days on line 29} \times \%}{365}$	30 \$	\$	\$	\$
31 Number of days on line 20 after 6/30/2019 and before 10/1/2019	31			
32 Underpayment on line 17 x $\frac{\text{Number of days on line 31} \times \%}{365}$	32 \$	\$	\$	\$
33 Number of days on line 20 after 9/30/2019 and before 1/1/2020	33			
34 Underpayment on line 17 x $\frac{\text{Number of days on line 33} \times \%}{365}$	34 \$	\$	\$	\$
35 Number of days on line 20 after 12/31/2019 and before 3/16/2020	35			
36 Underpayment on line 17 x $\frac{\text{Number of days on line 35} \times \%}{366}$	36 \$	\$	\$	\$
37 Add lines 22, 24, 26, 28, 30, 32, 34, and 36	37 \$	\$	\$	\$
38 Penalty. Add columns (a) through (d) of line 37. Enter the total here and on Form 1120, line 34; or the comparable line for other income tax returns	38 \$			64.

* Use the penalty interest rate for each calendar quarter, which the IRS will determine during the first month in the preceding quarter. These rates are published quarterly in an IRS News Release and in a revenue ruling in the Internal Revenue Bulletin. To obtain this information on the Internet, access the IRS website at www.irs.gov. You can also call 1-800-829-4933 to get interest rate information.

CHAR500

NYS Annual Filing for Charitable Organizations
www.CharitiesNYS.com

Send with fee and attachments to:
NYS Office of the Attorney General
Charities Bureau Registration Section
28 Liberty Street
New York, NY 10005

2018
Open to Public Inspection

1. General Information

For Fiscal Year Beginning (mm/dd/yyyy) 10/01/2018 and Ending (mm/dd/yyyy) 09/30/2019		
Check if Applicable: <input type="checkbox"/> Address Change <input type="checkbox"/> Name Change <input type="checkbox"/> Initial Filing <input type="checkbox"/> Final Filing <input type="checkbox"/> Amended Filing <input type="checkbox"/> Reg ID Pending	Name of Organization: BUFFALO PRENATAL-PERINATAL NETWORK, INC.	Employer Identification Number (EIN): 16-1302764
	Mailing Address: 625 DELAWARE AVENUE, NO. 410	NY Registration Number: 05-18-89
	City / State / ZIP: BUFFALO, NY 14202	Telephone: 716 844-6711
	Website: WWW.BPPN.ORG	Email:

Check your organization's registration category: 7A only EPTL only DUAL (7A & EPTL) EXEMPT* Confirm your Registration Category in the Charities Registry at www.CharitiesNYS.com.

2. Certification

See instructions for certification requirements. Improper certification is a violation of law that may be subject to penalties. The certification requires two signatories.

We certify under penalties of perjury that we reviewed this report, including all attachments, and to the best of our knowledge and belief, they are true, correct and complete in accordance with the laws of the State of New York applicable to this report.

President or Authorized Officer:

Signature

LUANNE BROWN
CHIEF EXECUTIVE OFFI

Print Name and Title

Date

Chief Financial Officer or Treasurer:

Signature

MICHAEL ALOIAN
FINANCE & HR MANAGER

Print Name and Title

Date

3. Annual Reporting Exemption

Check the exemption(s) that apply to your filing. If your organization is claiming an exemption under one category (7A or EPTL only filers) or both categories (DUAL filers) that apply to your registration, complete only parts 1, 2, and 3, and submit the certified Char500. No fee, schedules, or additional attachments are required. If you cannot claim an exemption or are a DUAL filer that claims only one exemption, you must file applicable schedules and attachments and pay applicable fees.

3a. 7A filing exemption: Total contributions from NY State including residents, foundations, government agencies, etc. did not exceed \$25,000 and the organization did not engage a professional fund raiser (PFR) or fund raising counsel (FRC) to solicit contributions during the fiscal year.

3b. EPTL filing exemption: Gross receipts did not exceed \$25,000 and the market value of assets did not exceed \$25,000 at any time during the fiscal year.

4. Schedules and Attachments

See the following page for a checklist of schedules and attachments to complete your filing.

Yes

No

4a. Did your organization use a professional fund raiser, fund raising counsel or commercial co-venturer for fund raising activity in NY State? If yes, complete Schedule 4a.

Yes

No

4b. Did the organization receive government grants? If yes, complete Schedule 4b.

5. Fee

See the checklist on the next page to calculate your fee(s). Indicate fee(s) you are submitting here:	7A filing fee: \$ <u>25.</u>	EPTL filing fee: \$ <u>100.</u>	Total fee: \$ <u>125.</u>	Make a single check or money order payable to: "Department of Law"
---	---------------------------------	------------------------------------	------------------------------	--

CHAR500 Annual Filing for Charitable Organizations (Updated January 2019)

*The "Exempt" category refers to an organization's NYS registration status. It does not refer to its IRS tax designation.

CHAR500

Annual Filing Checklist

- Simply submit the certified CHAR500 with no fee, schedule, or additional attachments IF:
- Your organization is registered as 7A only and you marked the 7A filing exemption in Part 3.
 - Your organization is registered as EPTL only and you marked the EPTL filing exemption in Part 3.
 - Your organization is registered as DUAL and you marked both the 7A and EPTL filing exemption in Part 3.

Checklist of Schedules and Attachments

Check the schedules you must submit with your CHAR500 as described in Part 4:

- If you answered "yes" in Part 4a, submit Schedule 4a: Professional Fund Raisers (PFR), Fund Raising Counsel (FRC), Commercial Co-Venturers (CCV)
- If you answered "yes" in Part 4b, submit Schedule 4b: Government Grants

Check the financial attachments you must submit with your CHAR500:

- IRS Form 990, 990-EZ, or 990-PF, and 990-T if applicable
- All additional IRS Form 990 Schedules, including Schedule B (Schedule of Contributors). Schedule B of public charities is exempt from disclosure and will not be available for public review.
- Our organization was eligible for and filed an IRS 990-N e-postcard. Our revenue exceeded \$25,000 and/or our assets exceeded \$25,000 in the filing year. We have included an IRS Form 990-EZ for state purposes only.

If you are a 7A only or DUAL filer, submit the applicable independent Certified Public Accountant's Review or Audit Report:

- Review Report if you received total revenue and support greater than \$250,000 and up to \$750,000.
- Audit Report if you received total revenue and support greater than \$750,000
- No Review Report or Audit Report is required because total revenue and support is less than \$250,000
- We are a DUAL filer and checked box 3a, no Review Report or Audit Report is required

Calculate Your Fee

For 7A and DUAL filers, calculate the 7A fee:

- \$0, if you checked the 7A exemption in Part 3a
- \$25, if you did not check the 7A exemption in Part 3a

For EPTL and DUAL filers, calculate the EPTL fee:

- \$0, if you checked the EPTL exemption in Part 3b
- \$25, if the NET WORTH is less than \$50,000
- \$50, if the NET WORTH is \$50,000 or more but less than \$250,000
- \$100, if the NET WORTH is \$250,000 or more but less than \$1,000,000
- \$250, if the NET WORTH is \$1,000,000 or more but less than \$10,000,000
- \$750, if the NET WORTH is \$10,000,000 or more but less than \$50,000,000
- \$1500, if the NET WORTH is \$50,000,000 or more

Send Your Filing

Send your CHAR500, all schedules and attachments, and total fee to:

NYS Office of the Attorney General
Charities Bureau Registration Section
28 Liberty Street
New York, NY 10005

Need Assistance?

Visit: www.CharitiesNYS.com
Call: (212) 416-8401
Email: Charities.Bureau@ag.ny.gov

Is my Registration Category 7A, EPTL, DUAL or EXEMPT?

Organizations are assigned a Registration Category upon registration with the NY Charities Bureau:

7A filers are registered to solicit contributions in New York under Article 7-A of the Executive Law ("7A")

EPTL filers are registered under the Estates, Powers & Trusts Law ("EPTL") because they hold assets and/or conduct activities for charitable purposes in NY.

DUAL filers are registered under both 7A and EPTL.

EXEMPT filers have registered with the NY Charities Bureau and meet conditions in **Schedule E - Registration Exemption for Charitable Organizations**. These organizations are not required to file annual financial reports but may do so voluntarily.

Confirm your Registration Category and learn more about NY law at www.CharitiesNYS.com.

Where do I find my organization's NET WORTH?

NET WORTH for fee purposes is calculated on:

- IRS Form 990 Part I, line 22
- IRS Form 990 EZ Part I, line 21
- IRS Form 990 PF, calculate the difference between Total Assets at Fair Market Value (Part II, line 16(c)) and Total Liabilities (Part II, line 23(b)).

CHAR500

Schedule 4b: Government Grants
www.CharitiesNYS.com

2018

Open to Public
Inspection

If you checked the box in question 4b in Part 4, complete this schedule and list EACH government grant award by a domestic (federal, state or local) agency; interstate or intergovernmental agency (for example Port Authority of New York and New Jersey); and state or local authorities.

Use additional pages if necessary. Include this schedule with your certified CHAR500 NYS Annual Filing for Charitable Organizations.

1. Organization Information

Name of Organization:	NY Registration Number:
BUFFALO PRENATAL-PERINATAL NETWORK, INC.	05-18-89

2. Government Grants

Name of Government Agency	Amount of Grant
1. NYS DEPARTMENT OF HEALTH	1. 635,970.
2. NYS DEPARTMENT OF SOCIAL SERVICES	2. 2,102,961.
3. OTHER	3. 9,868.
4.	4.
5.	5.
6.	6.
7.	7.
8.	8.
9.	9.
10.	10.
11.	11.
12.	12.
13.	13.
14.	14.
15.	15.
Total Government Grants:	Total: 2,748,799.